

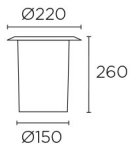


GEA Recessed uplighting

Description

Recessed uplighting IP65/IP67 GEA G12 35W AISI 316 stainless steel 2690lm

	Finish	Material
Structure	AISI 316 stainless steel	Stainless steel AISI316 Aluminium
Diffuser	Transparent	Glass



TECHNICAL CHARACTERISTICS

Light source

Lampholder: 1 x G12
 Light source power (W): MAX 35W
 Luminaire total power (W): 45W
 Real Lumen: 2690
 Quantity: 1
 Lm/Real W: 60
 UGR: 13.6
 Recommended lamp: G12

GEAR

Gear included: Yes, Magnetic
 Voltage / Frequency:
 220-240VAC/50-60Hz

Luminaire

Temperature on the surface: 80
 Seaside: No
 Warranty: 2 Years

Logistics

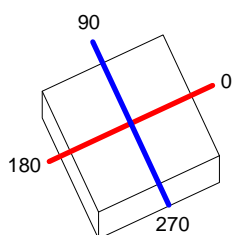
Energy Efficiency: A+
 EAN Code: 8435381435172
 Net Weight (Kg): 4.78
 Weight in Kg (packaged): 5.32
 Packing: 235 x 235 x 320
 Masterbox: 2

The photograph may not match the reference exactly. Please read the product description to identify the finish.

Luminaire		Measur.		Lamp	
Code	55-9323-Y4	Code	LEDS022	Code	HIE 35/942
Name	GEA	Name	GEA	Number	1
Line	Eulumdat	Date	29-04-1994	Position	
Efficiency	79.11%	Coordinate system	CG	Total Flux	3400.00 lm
Maximum value	23571.52 cd	Position	C=0.00 G=0.00	Asymmetrical	
Rectangular Luminaire	Length	220 mm	Width	220 mm	Height
Rectangular Luminous Area	Length	107 mm	Width	107 mm	Height
Horizontal Luminous Area	0.011449 m2	Emitting area on Plane 180°		0.000000 m2	
Emitting area on Plane 0°	0.000000 m2	Emitting area on Plane 270°		0.000000 m2	
Emitting area on Plane 90°	0.000000 m2	Glare area at 76°		0.002770 m2	
Symmetry Type	Asymmetrical	Maximum Gamma Angle		180	
Measurement Distance	0.00	Measurement Flux		3400.00 lm	
Operator		Source voltage			
Temperature	25.00 °C	Source current			
Humidity	60.00 %	Photocell			
Notes					

Line		Code		Luminaire Lamps		Flux [lm]	Pow. [W]	Q.ty
Eulumdat		HIE 35/942		Name		3400.00	0.00	1
C.I.E.	96 100 100 100 79			D DIN 5040	A60			
F UTE	0.79 A			B NBN	BZ 1			

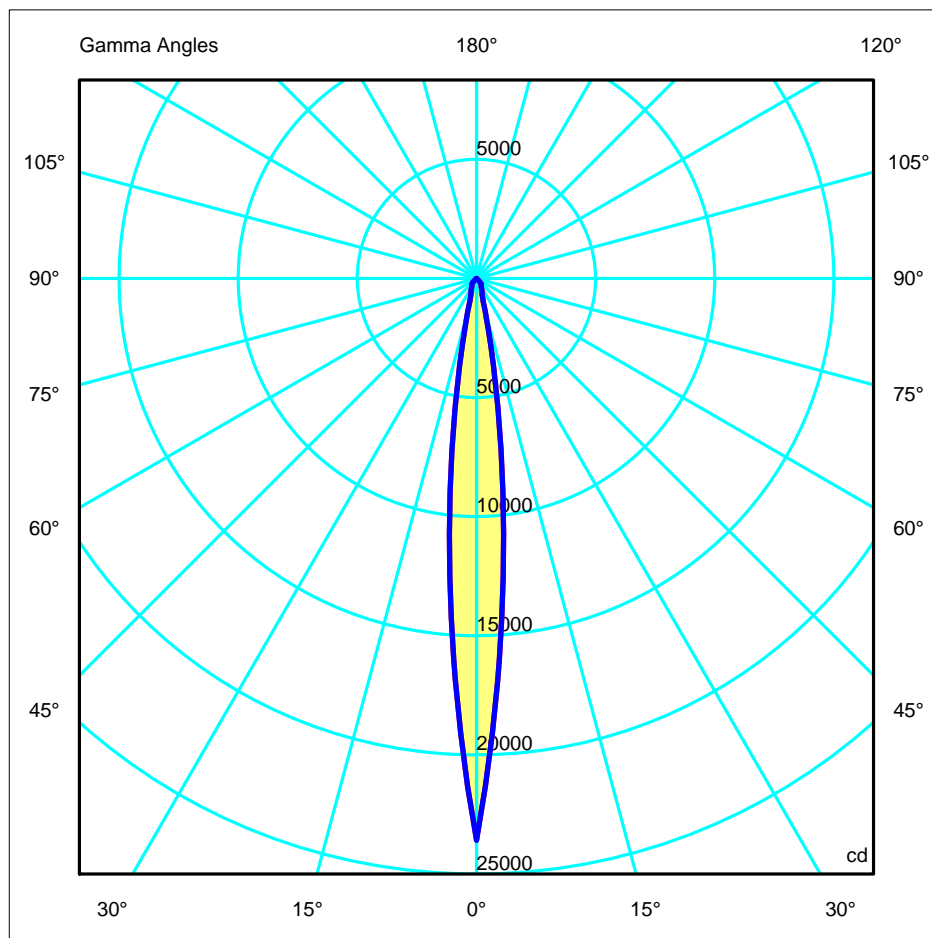
220mm x 220mm



C Halfplanes

180.0 — 0.0
270.0 — 90.0

ULOR 0.00 %
DLOR 79.11 %
RN 0.00 %



Luminaire
 Code 55-9323-Y4
 Name GEA
 Line Eulumat

Measur.
 Code LEDS022
 Name GEA
 Date 29-04-1994

Lamp
 Code HIE 35/942
 Number 1
 Position

Efficiency 79.11%

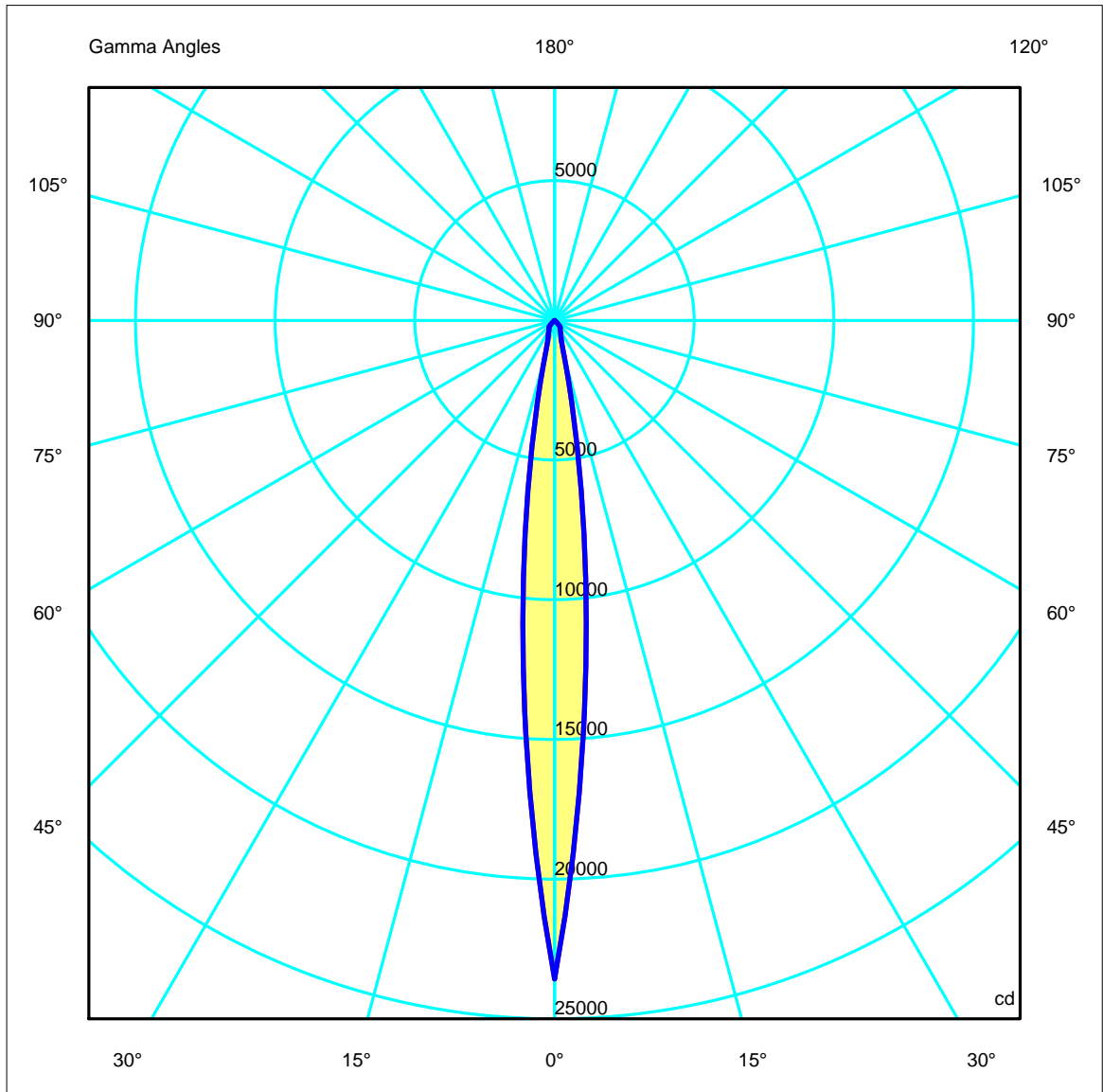
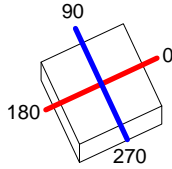
Coordinate system CG

Total Flux 3400.00 lm

220mm x 220mm

C Halfplanes

180.0 ————— 0.0
 270.0 ————— 90.0



Luminaire
 Code 55-9323-Y4
 Name GEA
 Line Eulumdat

Measur.
 Code LEDSO22
 Name GEA
 Date 29-04-1994

Lamp
 Code HIE 35/942
 Number 1
 Position

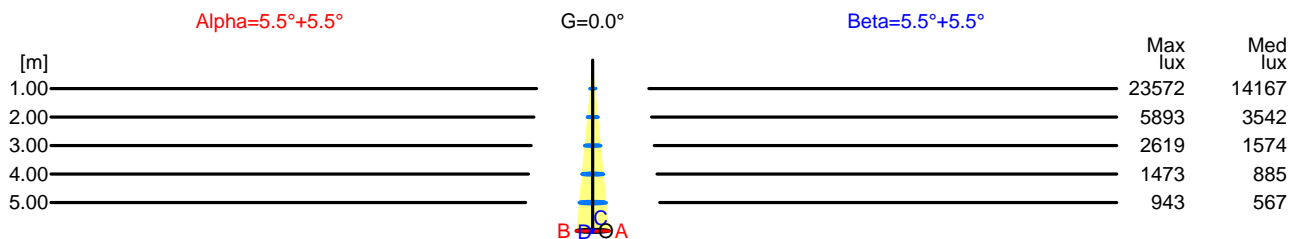
Efficiency 79.11% Coordinate system CG Total Flux 3400.00 lm

Width at 50.00 % of Max Intensity

H[m]	1.00	2.00	3.00	4.00	5.00	H[m]	1.00	2.00	3.00	4.00	5.00
OA	0.10	0.19	0.29	0.39	0.48	OC	0.10	0.19	0.29	0.39	0.48
OB	0.10	0.19	0.29	0.39	0.48	OD	0.10	0.19	0.29	0.39	0.48

Luminous Intensities [cd]

	0	5	15	25	35	45	55	65	75	85
OA	23571.52	12779.39	1336.47	520.79	348.84	164.22	2.04	0.00	0.00	0.00
OB	23571.52	12779.39	1336.47	520.81	348.84	163.54	2.04	0.00	0.00	0.00
OC	23571.52	12779.39	1336.47	520.81	348.84	163.54	2.04	0.00	0.00	0.00
OD	23571.52	12779.39	1336.47	520.81	348.84	163.54	2.04	0.00	0.00	0.00



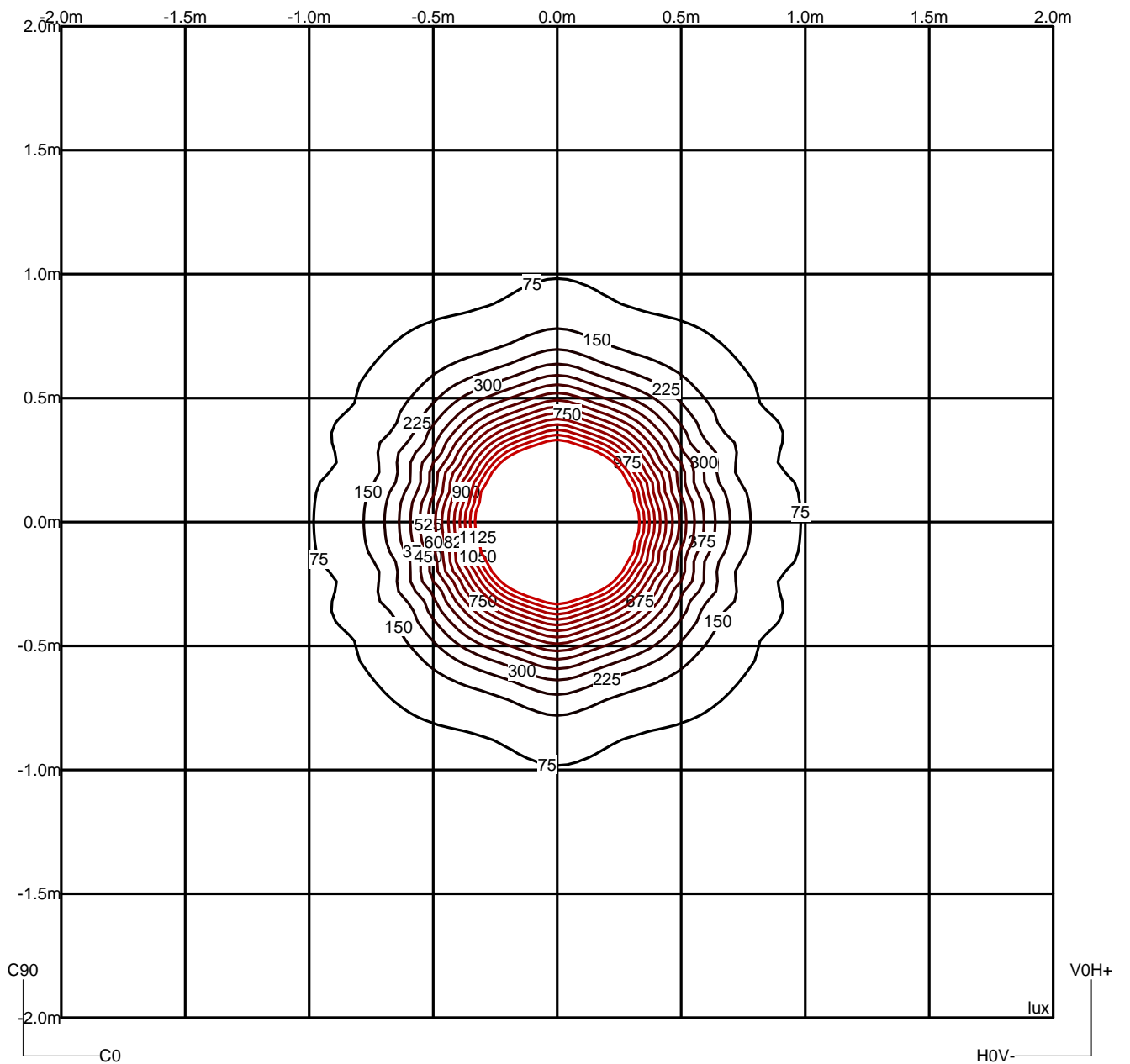
H[m]	D[m]	Max lux	Med lux	Alpha=5.5°+5.5°	G=0.0	
1.00	0.19	23572	14167			
2.00	0.39	5893	3542			
3.00	0.58	2619	1574			
4.00	0.77	1473	885			
5.00	0.97	943	567			

H[m]	D[m]	Max lux	Med lux	Beta=5.5°+5.5°	G=0.0	
1.00	0.19	23572	14167			
2.00	0.39	5893	3542			
3.00	0.58	2619	1574			
4.00	0.77	1473	885			
5.00	0.97	943	567			

Luminaire		Measur.		Lamp	
Code	55-9323-Y4	Code	LEDS022	Code	HIE 35/942
Name	GEA	Name	GEA	Number	1
Line	Eulumdat	Date	29-04-1994	Position	
Efficiency	79.11%	Coordinate system	CG	Total Flux	3400.00 lm

Isolux (Floor)

Luminaire position X=0.00m Y=0.00m Z=3.00m



Luminaire
 Code 55-9323-Y4
 Name GEA
 Line Eulumdat

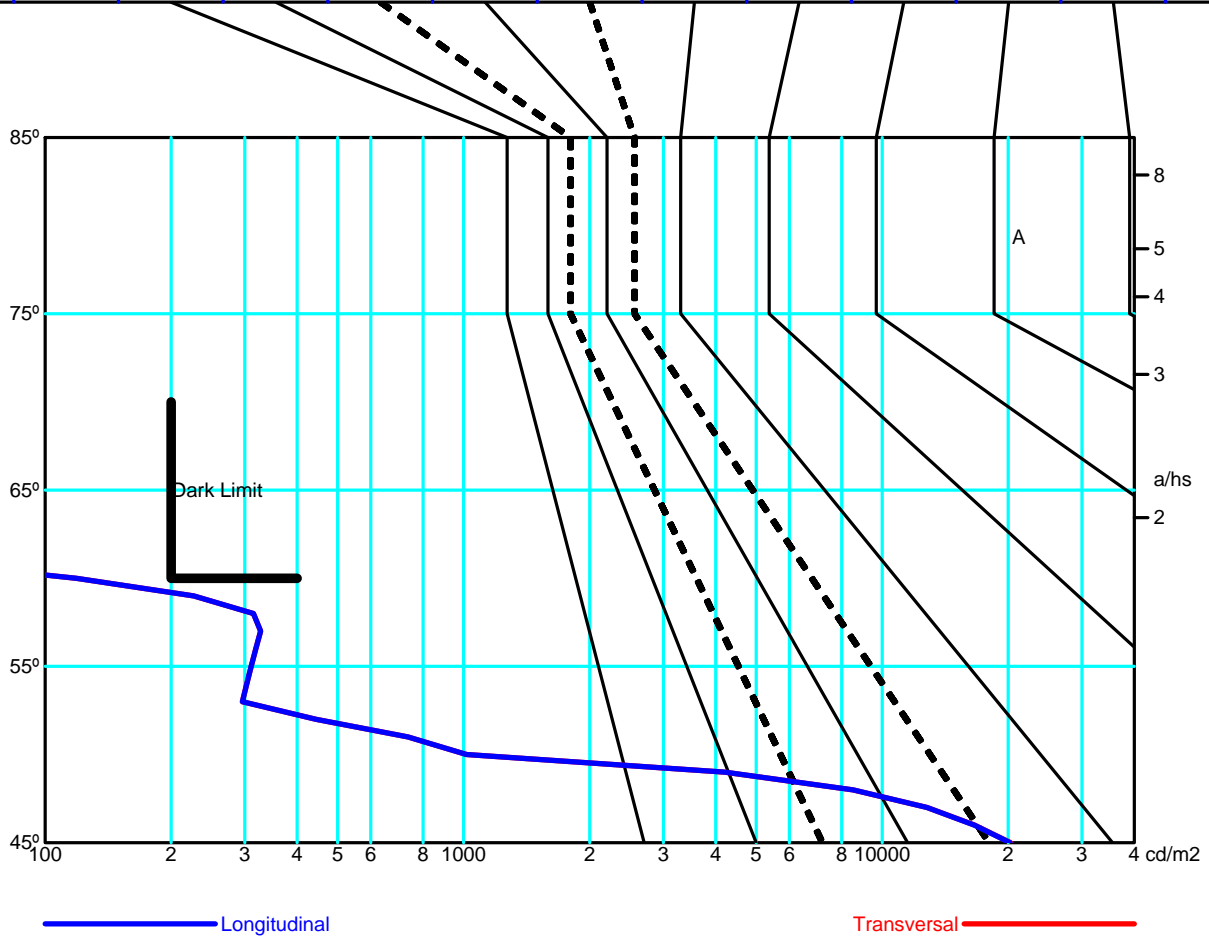
Measur.
 Code LEDSO22
 Name GEA
 Date 29-04-1994

Lamp
 Code HIE 35/942
 Number 1
 Position

Efficiency 79.11% Coordinate system CG Total Flux 3400.00 lm

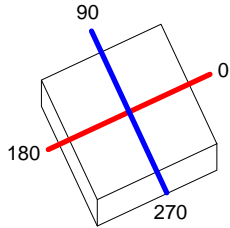
Average Luminance [cd/m ²]										
0.0°	45°	50°	55°	60°	65°	70°	75°	80°	85°	
20285	1016	311	119	0	0	0	0	0	0	---
20201	1016	311	119	0	0	0	0	0	0	---

Flush mounted or longitudinal view												
		Illumination(lx)										
A	A	2000	1000	750	500		<300					1.15
B	1		2000	1500	1000	750	500	<300				1.5
C					2000		1000	500	<300			1.85
D	2						2000	1000	500	<300		2.2
E	3							2000	1000	500	<300	2.55



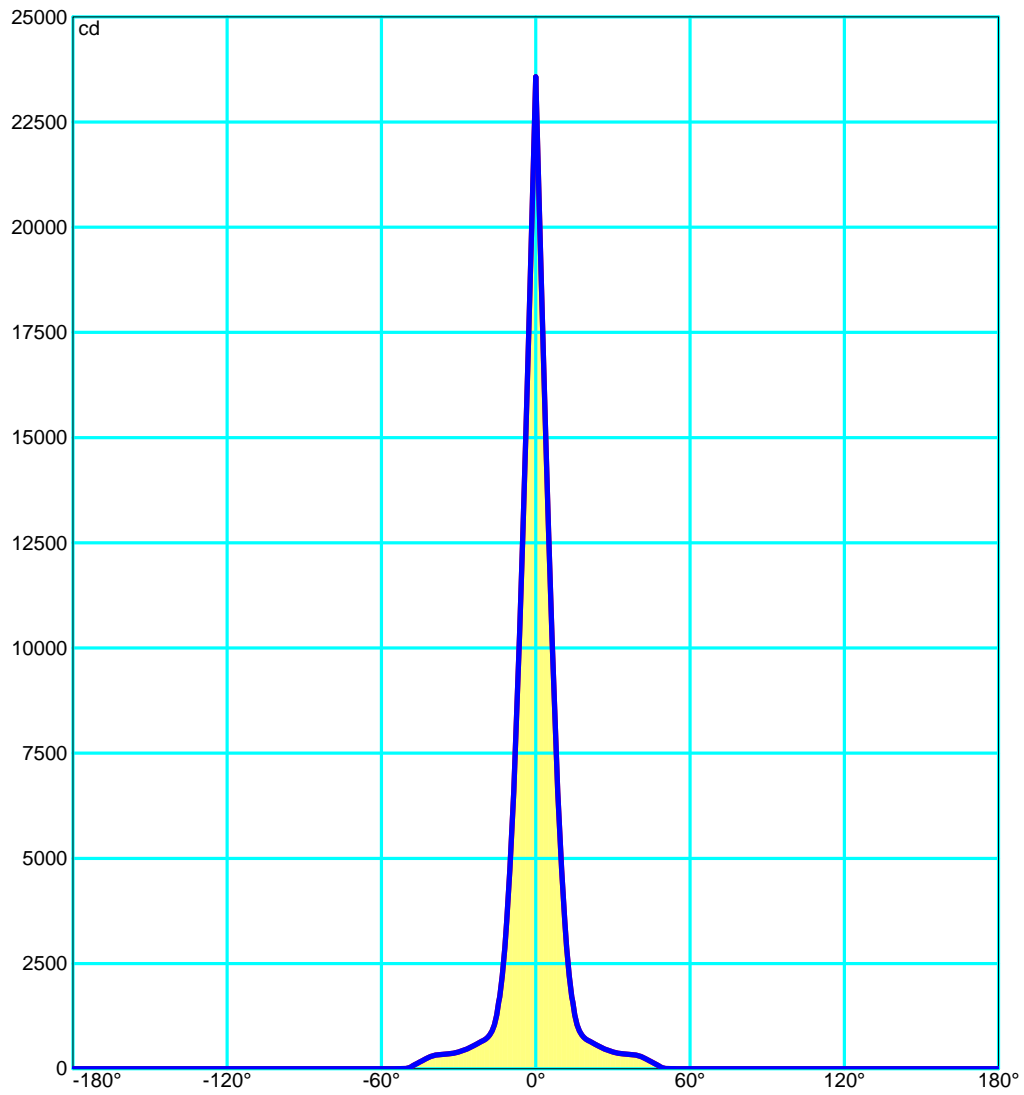
Luminaire		Measur.		Lamp	
Code	55-9323-Y4	Code	LEDS022	Code	HIE 35/942
Name	GEA	Name	GEA	Number	1
Line	Eulumdat	Date	29-04-1994	Position	
Efficiency	79.11%	Coordinate system	CG	Total Flux	3400.00 lm

220mm x 220mm



C Halfplanes

180.0 ——— 0.0
 270.0 ——— 90.0



Luminaire		Measur.		Lamp	
Code	55-9323-Y4	Code	LEDS022	Code	HIE 35/942
Name	GEA	Name	GEA	Number	1
Line	Eulumdat	Date	29-04-1994	Position	
Efficiency	79.11%	Coordinate system	CG	Total Flux	3400.00 lm

UGR
S = 0.250

Reflectancies										
Ceiling/Cavity	0.7	0.7	0.5	0.5	0.3	0.7	0.7	0.5	0.5	0.3
Walls	0.5	0.3	0.5	0.3	0.3	0.5	0.3	0.5	0.3	0.3
WorkingPlane	0.2	0.2	0.2	0.2	0.2	0.2	0.2	0.2	0.2	0.2
RoomDimensions	ViewedCrosswise					ViewedEndwise				
x=2H y=2H	14.4	15.0	14.6	15.2	15.4	14.4	15.0	14.6	15.2	15.4
x=2H y=3H	14.2	14.9	14.5	15.1	15.3	14.2	14.8	14.5	15.1	15.3
x=2H y=4H	14.2	14.7	14.5	15.0	15.2	14.2	14.7	14.5	15.0	15.2
x=2H y=6H	14.1	14.6	14.4	14.9	15.2	14.1	14.6	14.4	14.9	15.2
x=2H y=8H	14.0	14.6	14.4	14.8	15.1	14.0	14.6	14.4	14.8	15.1
x=2H y=12H	14.0	14.5	14.4	14.8	15.1	14.0	14.5	14.4	14.8	15.1
x=4H y=2H	14.2	14.7	14.5	15.0	15.2	14.2	14.7	14.5	15.0	15.2
x=4H y=3H	14.0	14.5	14.4	14.8	15.1	14.0	14.5	14.4	14.8	15.1
x=4H y=4H	13.9	14.4	14.3	14.7	15.0	13.9	14.4	14.3	14.7	15.0
x=4H y=6H	13.9	14.2	14.3	14.6	14.9	13.9	14.2	14.3	14.6	14.9
x=4H y=8H	13.8	14.1	14.2	14.5	14.9	13.8	14.1	14.2	14.5	14.9
x=4H y=12H	13.8	14.0	14.2	14.4	14.9	13.8	14.0	14.2	14.4	14.9
x=8H y=4H	13.8	14.1	14.2	14.5	14.9	13.8	14.1	14.2	14.5	14.9
x=8H y=6H	13.7	14.0	14.2	14.4	14.8	13.7	14.0	14.2	14.4	14.8
x=8H y=8H	13.7	13.9	14.2	14.3	14.8	13.7	13.9	14.2	14.3	14.8
x=8H y=12H	13.6	13.8	14.1	14.2	14.8	13.6	13.8	14.1	14.2	14.8
x=12H y=4H	13.8	14.0	14.2	14.4	14.9	13.8	14.0	14.2	14.4	14.9
x=12H y=6H	13.7	13.9	14.2	14.3	14.8	13.7	13.9	14.2	14.3	14.8
x=12H y=8H	13.6	13.8	14.1	14.2	14.8	13.6	13.8	14.1	14.2	14.8

Luminaire
 Code 55-9323-Y4
 Name GEA
 Line Eulumdat

Measur.
 Code LEDS022
 Name GEA
 Date 29-04-1994

Lamp
 Code HIE 35/942
 Number 1
 Position

Efficiency 79.11% Coordinate system CG Total Flux 3400.00 lm

Total Flux=3400.00 Luminaire Flux=2689.59

RI	0.60	0.80	1.00	1.25	1.50	2.00	2.50	3.00	4.00	5.00	10.00	20.00
DRR	0.71	0.76	0.81	0.84	0.87	0.92	0.95	0.97	0.98	0.99	1.01	1.02
RC	-	-	-	-	-	-	-	-	-	-	-	-

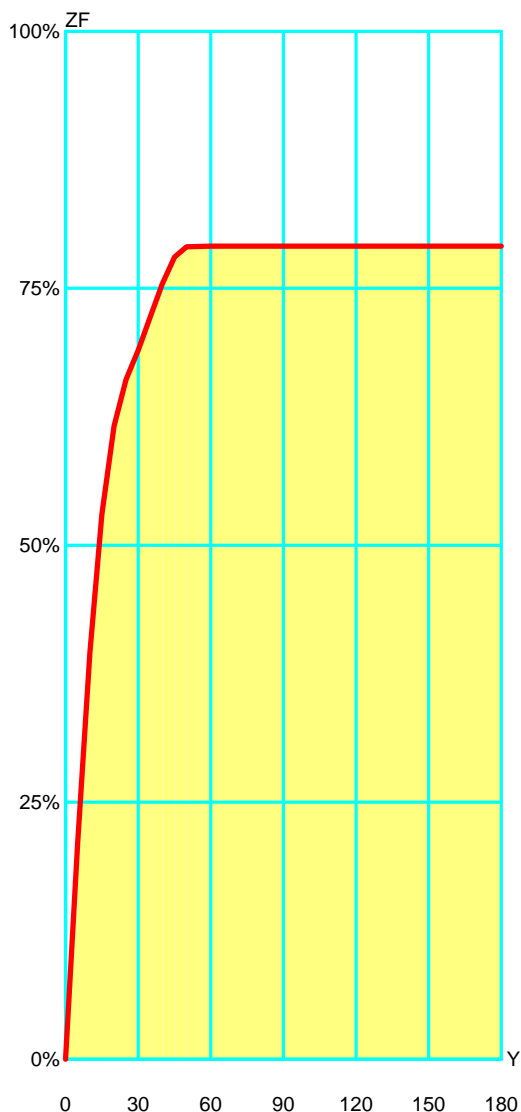
Zonal Flux per 1000 Lumen

Y°	10	20	30	40	50	60	70	80	90	100	110	120	130	140	150	160	170	180
ZF(Y)	395	616	690	755	790	791	791	791	791	791	791	791	791	791	791	791	791	791

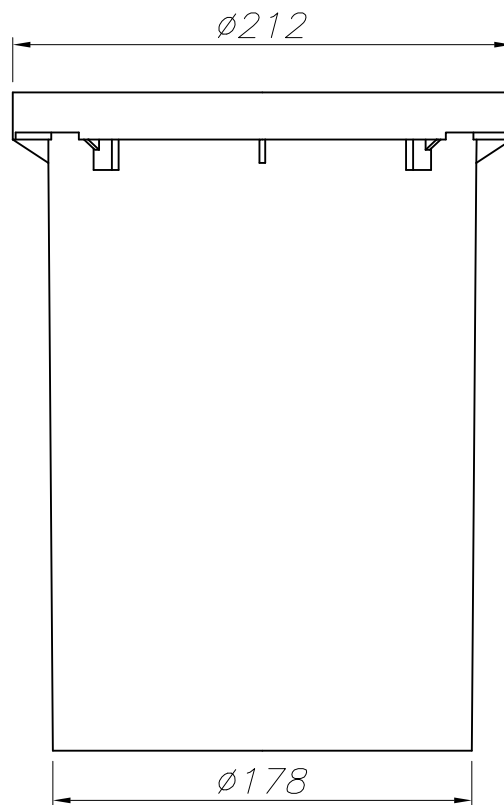
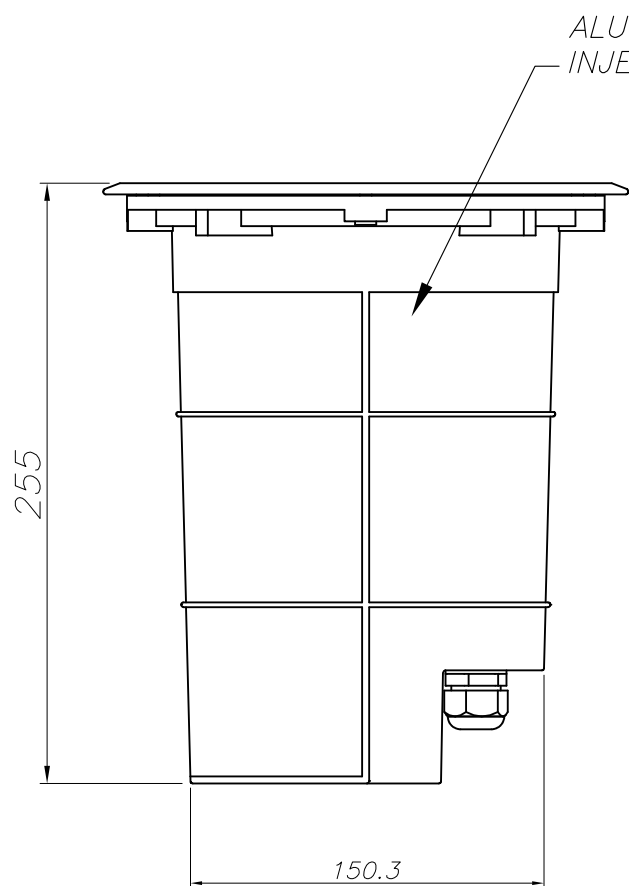
CIE Flux Codes

96 100 100 100 79

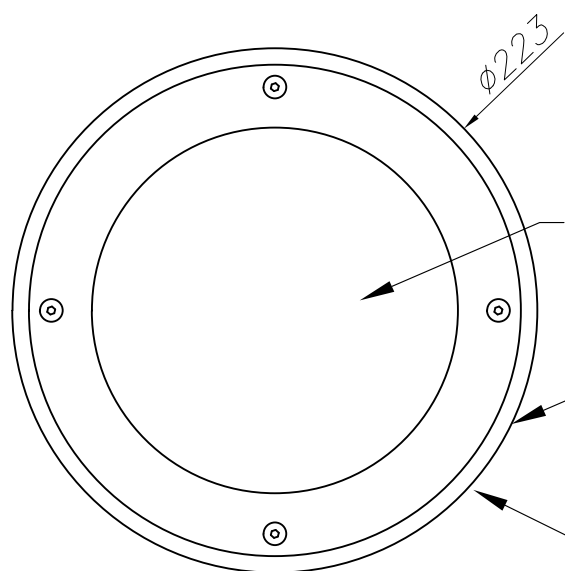
C.I.E.	-/-/-/-/-/-/-/-/-/-	LOR	79.10564 %
D DIN 5040	A60	ULOR	0.00000 %
F UTE	0.79 A	DLOR	79.10564 %
B NBN	BZ 1	UFF	0.00000 %
RN	0.00000 %	DFF	100.00000 %
BLF	1.0	FFR	0.00000 %



Zonal Flux				
Gamma °	Flux	Sum lm	Flux [%]	Sum [%]
0°	0.00	0.00	0.00%	0.00 %
5°	211.41	211.41	26.73 %	26.73 %
10°	184.07	395.49	23.27 %	49.99 %
15°	134.86	530.34	17.05 %	67.04 %
20°	85.59	615.93	10.82 %	77.86 %
25°	45.33	661.26	5.73 %	83.59 %
30°	28.55	689.81	3.61 %	87.20 %
35°	32.38	722.19	4.09 %	91.29 %
40°	32.39	754.58	4.09 %	95.39 %
45°	25.90	780.48	3.27 %	98.66 %
50°	9.89	790.37	1.25 %	99.91 %
55°	0.39	790.76	0.05 %	99.96 %
60°	0.27	791.02	0.03 %	100.00 %
65°	0.03	791.06	0.00 %	100.00 %
70°	0.00	791.06	0.00 %	100.00 %
75°	0.00	791.06	0.00 %	100.00 %
80°	0.00	791.06	0.00 %	100.00 %
85°	0.00	791.06	0.00 %	100.00 %
90°	0.00	791.06	0.00 %	100.00 %
95°	0.00	791.06	0.00 %	100.00 %
100°	0.00	791.06	0.00 %	100.00 %
105°	0.00	791.06	0.00 %	100.00 %
110°	0.00	791.06	0.00 %	100.00 %
115°	0.00	791.06	0.00 %	100.00 %
120°	0.00	791.06	0.00 %	100.00 %
125°	0.00	791.06	0.00 %	100.00 %
130°	0.00	791.06	0.00 %	100.00 %
135°	0.00	791.06	0.00 %	100.00 %
140°	0.00	791.06	0.00 %	100.00 %
145°	0.00	791.06	0.00 %	100.00 %
150°	0.00	791.06	0.00 %	100.00 %
155°	0.00	791.06	0.00 %	100.00 %
160°	0.00	791.06	0.00 %	100.00 %
165°	0.00	791.06	0.00 %	100.00 %
170°	0.00	791.06	0.00 %	100.00 %
175°	0.00	791.06	0.00 %	100.00 %
180°	0.00	791.06	0.00 %	100.00 %



CAJA DE EMPOTRAR
FLUSH FITTING BOX



CRISTAL TEMPLADO TRANSPARENTE
TEMPERED TRANSPARENT GLASS

ACERO INOXIDABLE AISI 304
STAINLESS STEEL AISI 304
55-9323-Y4-37

ACERO INOXIDABLE AISI 316
STAINLESS STEEL AISI 316
55-9323-CA-37

