

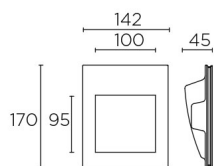
SECRET Signalling



Description

Signal lighting/light for indoor use.

For frontal lighting and downlighting. Lenses allow optimum control of illumination with minimal residual halo. Structure material: Plaster. Structure finish: White. Diffuser material: Polycarbonate. Diffuser finish: Transparent. Warranty: 2 Years.



Finish
White
Transparent

Material
Plaster
Polycarbonate



Ⓜ 175x145

⚡ 9-15

TECHNICAL CHARACTERISTICS

Light source

Light source: LED CREE
Output (W): 1W
Total power consumption (W): 2.4
Color temperature: LED warm-white 3000K
Photobiological risk: RG2
Real Lumen: 43
Qty Leds: 1
Lm/Real W: 18
Life Time: 36.000h L70B30
Bin / Grup: 7C1 o 7B4
MacAdam steps: 3
UGR: 6.3

GEAR

This item requires gear. It is not included.

Luminaire

Warranty: 2 Years

Logistics

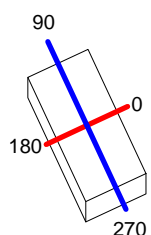
Energy Efficiency: LED A++
EAN Code: 8435381400767
Net Weight (Kg): 0.860
Weight in Kg (packaged): 1.060
Packing: 230 x 210 x 105
Masterbox: 12

The photograph may not match the reference exactly. Please read the product description to identify the finish.

| | | | | | | |
|----------------------------|---------------|-----------------------------|----------------|--------------|----------|-------|
| Luminaire | | Measur. | | Lamp | | |
| Code | 05-1808 | Code | 05-1808 | Code | LED | |
| Name | WALL FIXTURES | Name | WALL FIXTURES | Number | 1 | |
| Line | Eulumdat | Date | 13-10-2012 | Position | | |
| Efficiency | 49.11% | Coordinate system | CG | Total Flux | 87.40 lm | |
| Maximum value | 72.84 cd | Position | C=0.00 G=75.00 | Asymmetrical | | |
| Rectangular Luminaire | Length | 165 mm | Width | 80 mm | Height | 45 mm |
| Rectangular Luminous Area | Length | 165 mm | Width | 80 mm | Height | 45 mm |
| Horizontal Luminous Area | 0.013200 m2 | Emitting area on Plane 180° | | 0.007425 m2 | | |
| Emitting area on Plane 0° | 0.007425 m2 | Emitting area on Plane 270° | | 0.003600 m2 | | |
| Emitting area on Plane 90° | 0.003600 m2 | Glare area at 76° | | 0.010398 m2 | | |
| Symmetry Type | Asymmetrical | Maximum Gamma Angle | | 180 | | |
| Measurement Distance | 0.00 | Measurement Flux | | 87.40 lm | | |
| Operator | | Source voltage | | | | |
| Temperature | 25.00 °C | Source current | | | | |
| Humidity | 60.00 % | Photocell | | | | |
| Notes | | | | | | |

| Line | | Code | | Luminaire Lamps | | Flux [lm] | Pow. [W] | Q.ty |
|----------|-----------------|------|--|-----------------|------|-----------|----------|------|
| Eulumdat | | LED | | Name | | | | |
| | | | | LED - 2.40 W | | 87.40 | 2.40 | 1 |
| C.I.E. | 34 58 91 100 49 | | | D DIN 5040 | A20 | | | |
| F UTE | 0.49 H | | | B NBN | BZ 6 | | | |

165mm x 80mm



C Halfplanes

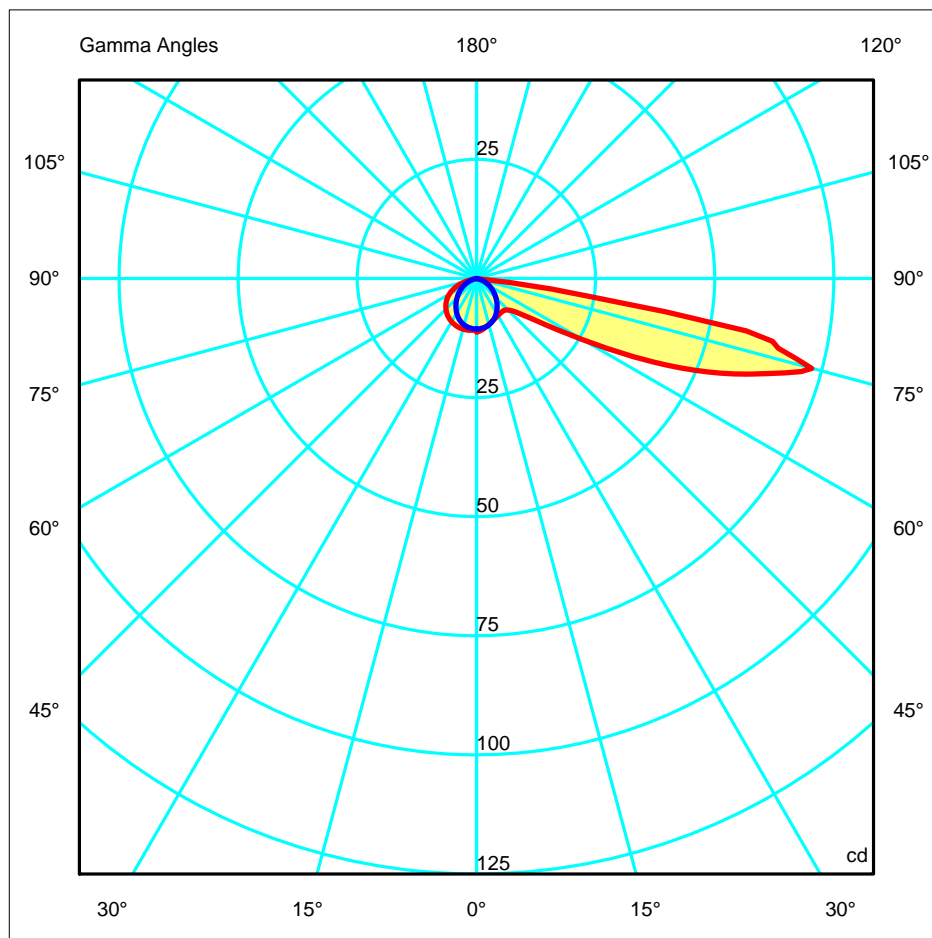
180.0 — 0.0 (Red line)

270.0 — 90.0 (Blue line)

ULOR 0.00 %

DLOR 49.11 %

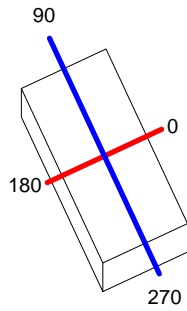
RN 0.00 %



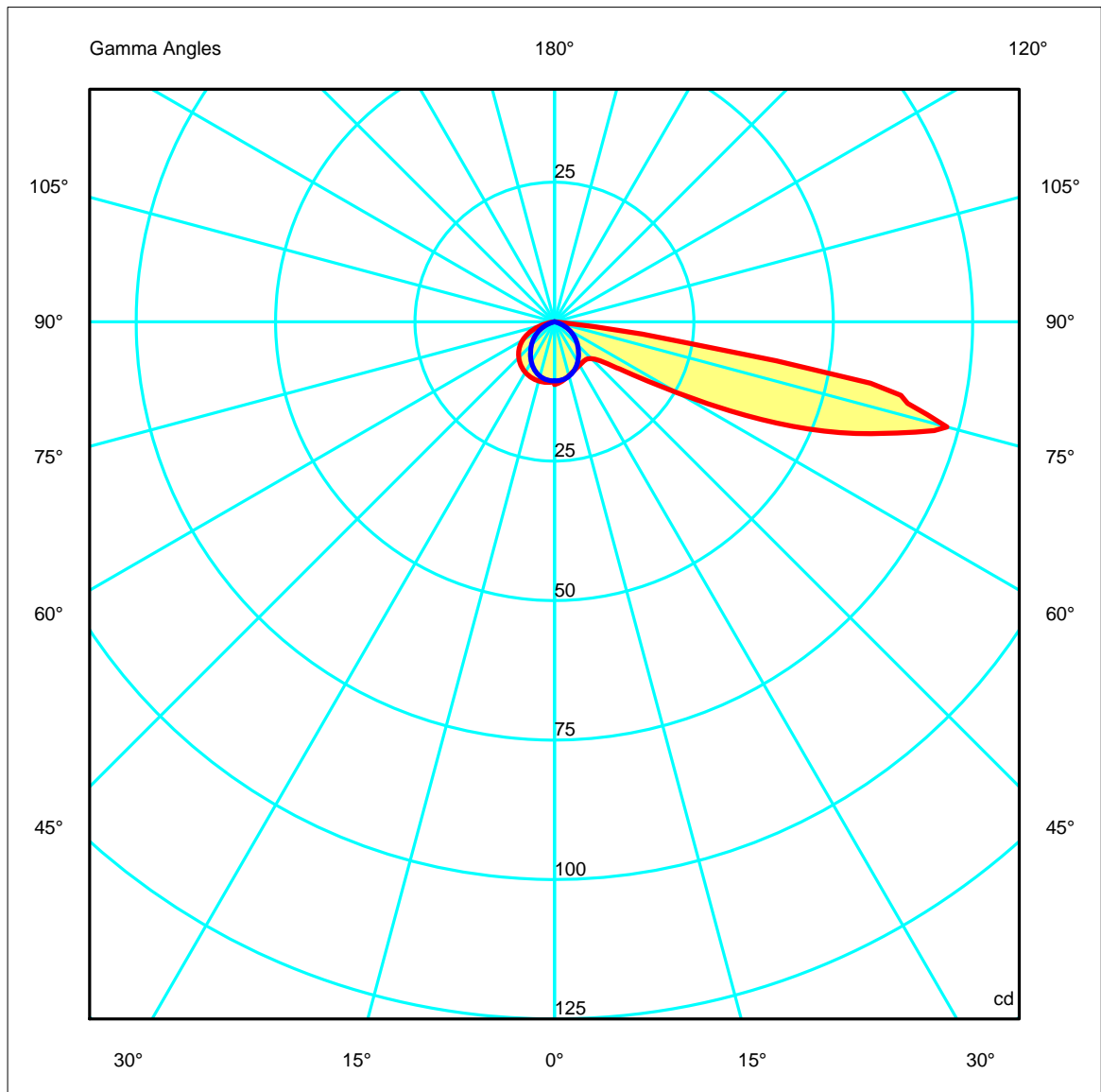
| | | | | | |
|------------------|---------------|-------------------|---------------|-------------|----------|
| Luminaire | | Measur. | | Lamp | |
| Code | 05-1808 | Code | 05-1808 | Code | LED |
| Name | WALL FIXTURES | Name | WALL FIXTURES | Number | 1 |
| Line | Eulumdat | Date | 13-10-2012 | Position | |
| Efficiency | 49.11% | Coordinate system | CG | Total Flux | 87.40 lm |

165mm x 80mm

C Halfplanes



180.0 ——— 0.0
 270.0 ——— 90.0

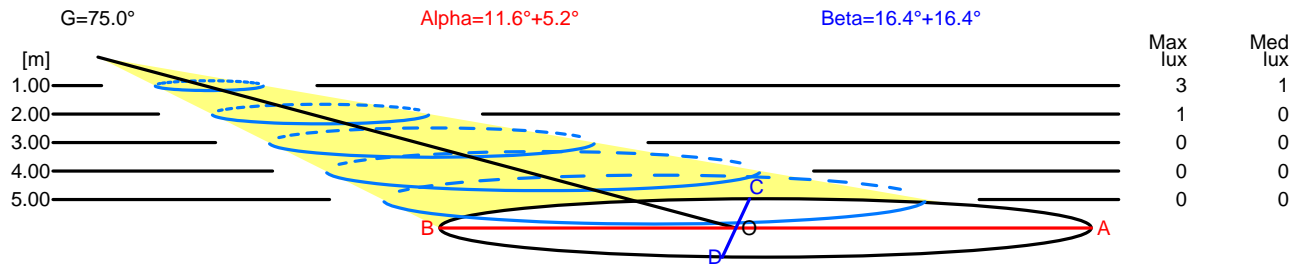


| | | | | | |
|------------------|---------------|-------------------|---------------|-------------|----------|
| Luminaire | | Measur. | | Lamp | |
| Code | 05-1808 | Code | 05-1808 | Code | LED |
| Name | WALL FIXTURES | Name | WALL FIXTURES | Number | 1 |
| Line | Eulumdat | Date | 13-10-2012 | Position | |
| Efficiency | 49.11% | Coordinate system | CG | Total Flux | 87.40 lm |

Width at 50.00 % of Max Intensity

| | | | | | | | | | | | |
|------|------|------|------|------|-------|------|------|------|------|------|------|
| H[m] | 1.00 | 2.00 | 3.00 | 4.00 | 5.00 | H[m] | 1.00 | 2.00 | 3.00 | 4.00 | 5.00 |
| OA | 2.08 | 4.16 | 6.24 | 8.32 | 10.40 | OC | 1.14 | 2.28 | 3.41 | 4.55 | 5.69 |
| OB | 1.73 | 3.46 | 5.20 | 6.93 | 8.66 | OD | 1.14 | 2.28 | 3.41 | 4.55 | 5.69 |

| | | | | | | | | | | |
|----|----------------------------|-------|-------|-------|-------|------|-------|-------|-------|------|
| | Luminous Intensities [cd] | | | | | | | | | |
| | 0 | 5 | 15 | 25 | 35 | 45 | 55 | 65 | 75 | 85 |
| OA | 11.26 | 10.96 | 10.01 | 9.24 | 8.82 | 9.33 | 15.64 | 41.99 | 72.84 | 0.00 |
| OB | 10.68 | 10.89 | 11.00 | 10.74 | 10.10 | 9.07 | 7.56 | 5.40 | 2.32 | 0.00 |
| OC | 10.55 | 10.58 | 10.09 | 9.03 | 7.50 | 5.83 | 4.09 | 2.17 | 0.26 | 0.00 |
| OD | 10.55 | 10.58 | 10.09 | 9.03 | 7.50 | 5.83 | 4.09 | 2.17 | 0.26 | 0.00 |



| H[m] | D[m] | Max lux | Med lux | Alpha=11.6°+5.2° | G=75.0 |
|------|-------|---------|---------|------------------|--------|
| 1.00 | 3.81 | 3 | 1 | | |
| 2.00 | 7.62 | 1 | 0 | | |
| 3.00 | 11.43 | 0 | 0 | | |
| 4.00 | 15.25 | 0 | 0 | | |
| 5.00 | 19.06 | 0 | 0 | | |

| H[m] | D[m] | Max lux | Med lux | Beta=16.4°+16.4° | G=0.0 |
|------|-------|---------|---------|------------------|-------|
| 1.00 | 2.28 | 3 | 1 | | |
| 2.00 | 4.55 | 1 | 0 | | |
| 3.00 | 6.83 | 0 | 0 | | |
| 4.00 | 9.10 | 0 | 0 | | |
| 5.00 | 11.38 | 0 | 0 | | |

Luminaire
 Code 05-1808
 Name WALL FIXTURES
 Line Eulumdat

Measur.
 Code 05-1808
 Name WALL FIXTURES
 Date 13-10-2012

Lamp
 Code LED
 Number 1
 Position

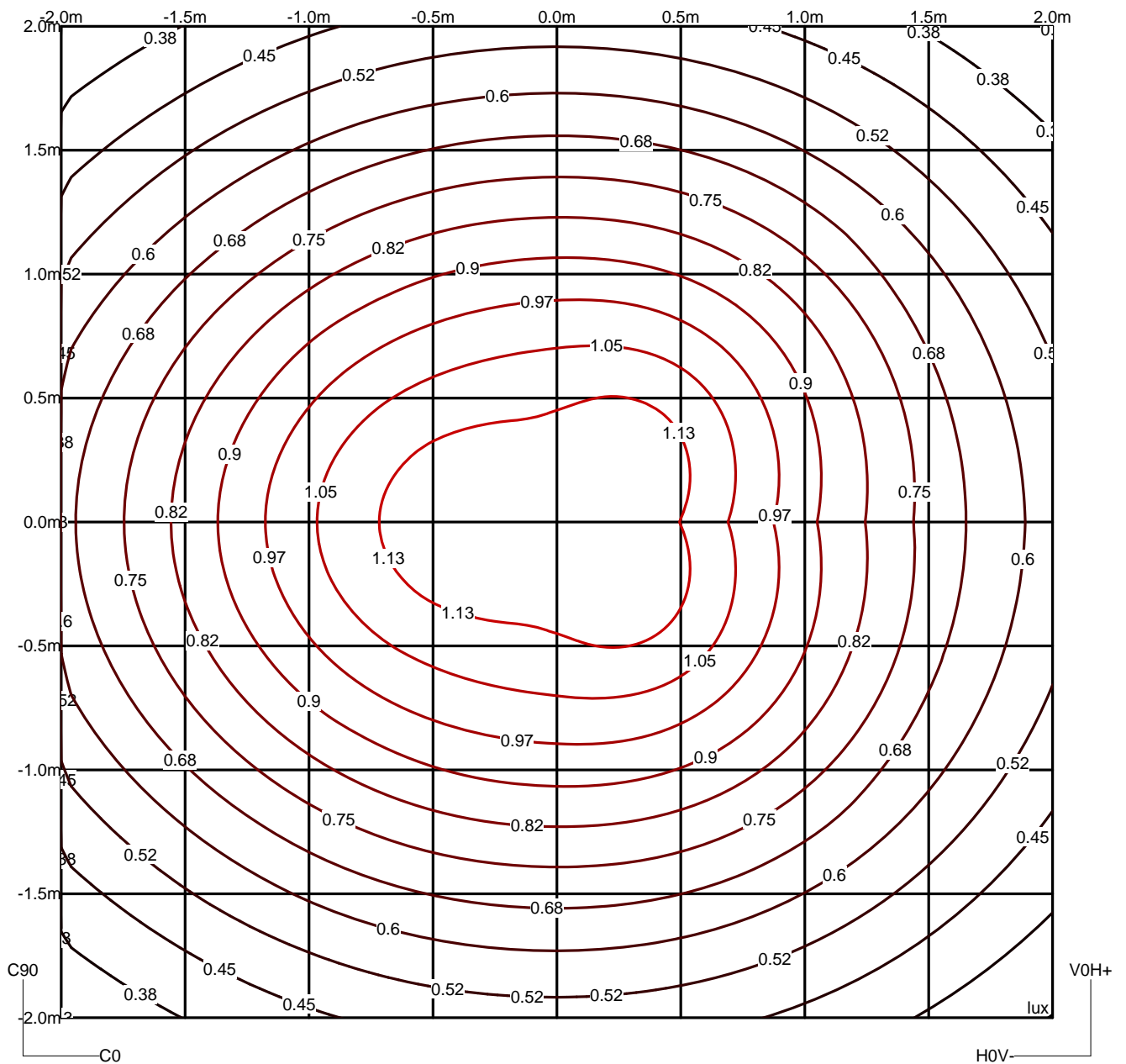
Efficiency 49.11%

Coordinate system CG

Total Flux 87.40 lm

Isolux (Floor)

Luminaire position X=0.00m Y=0.00m Z=3.00m



Luminaire

Code 05-1808
 Name WALL FIXTURES
 Line Eulumdat

Measur.

Code 05-1808
 Name WALL FIXTURES
 Date 13-10-2012

Lamp

Code LED
 Number 1
 Position

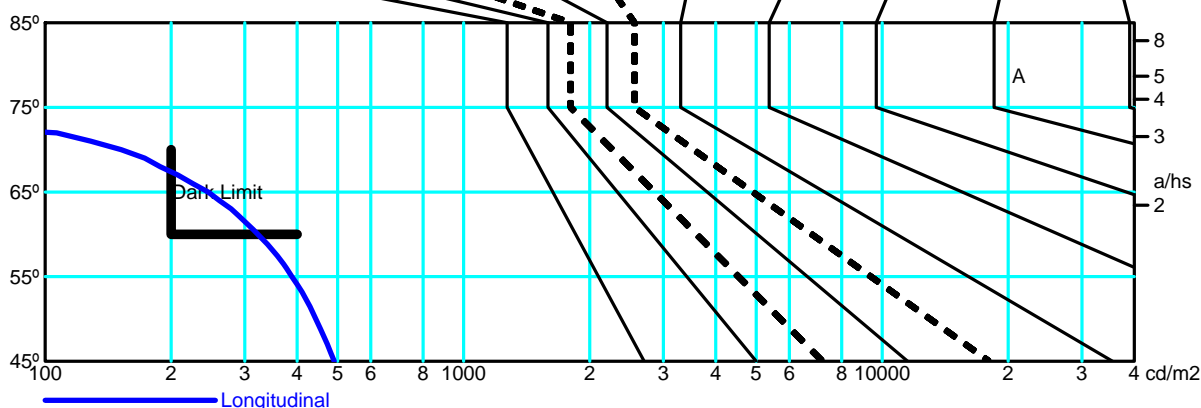
Efficiency 49.11%

Coordinate system CG

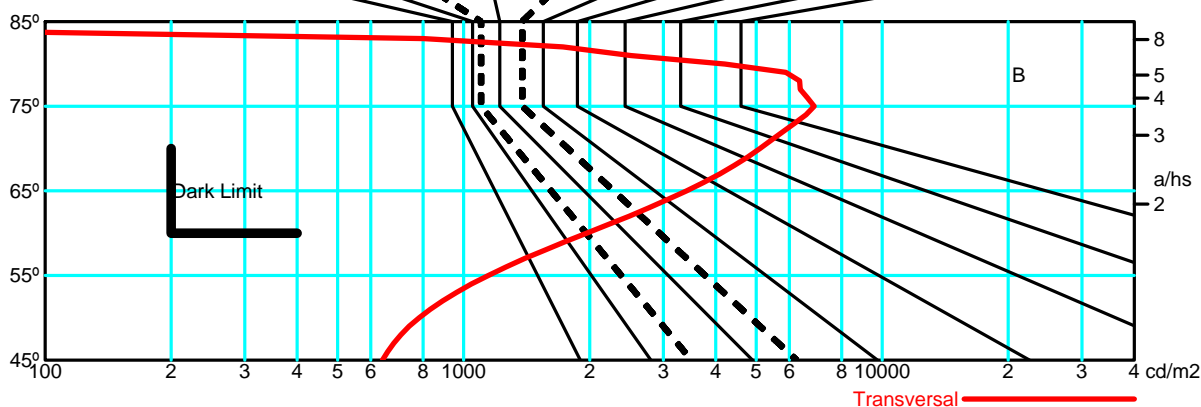
Total Flux 87.40 lm

| | | Average Luminance [cd/m ²] | | | | | | | | | |
|-------|--|--|-----|------|------|------|------|------|------|-----|-----|
| | | 0.0° | 45° | 50° | 55° | 60° | 65° | 70° | 75° | 80° | 85° |
| 90.0° | | 640 | 783 | 1146 | 1965 | 3412 | 5101 | 6879 | 4206 | 0 | --- |
| | | 491 | 444 | 389 | 323 | 245 | 152 | 38 | 0 | 0 | --- |

| Flush mounted or longitudinal view | | | | | | | | | | | | |
|------------------------------------|---|------------------|------|------|------|------|------|------|------|------|------|------|
| | | Illumination(lx) | | | | | | | | | | |
| A | A | 2000 | 1000 | 750 | 500 | <300 | | | | | 1.15 | |
| B | 1 | | 2000 | 1500 | 1000 | 750 | 500 | <300 | | | 1.5 | |
| C | | | | | 2000 | | 1000 | 500 | <300 | | 1.85 | |
| D | 2 | | | | | | 2000 | 1000 | 500 | <300 | 2.2 | |
| E | 3 | | | | | | | 2000 | 1000 | 500 | <300 | 2.55 |

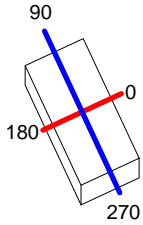


| Flush mounted or transversal view | | | | | | | | | | | | |
|-----------------------------------|---|------------------|------|------|------|------|------|------|------|------|------|------|
| | | Illumination(lx) | | | | | | | | | | |
| A | A | 2000 | 1000 | 750 | 500 | <300 | | | | | 1.15 | |
| B | 1 | | 2000 | 1500 | 1000 | 750 | 500 | <300 | | | 1.5 | |
| C | | | | | 2000 | | 1000 | 500 | <300 | | 1.85 | |
| D | 2 | | | | | | 2000 | 1000 | 500 | <300 | 2.2 | |
| E | 3 | | | | | | | 2000 | 1000 | 500 | <300 | 2.55 |



| | | | | | |
|------------------|---------------|-------------------|---------------|-------------|----------|
| Luminaire | | Measur. | | Lamp | |
| Code | 05-1808 | Code | 05-1808 | Code | LED |
| Name | WALL FIXTURES | Name | WALL FIXTURES | Number | 1 |
| Line | Eulumdat | Date | 13-10-2012 | Position | |
| Efficiency | 49.11% | Coordinate system | CG | Total Flux | 87.40 lm |

165mm x 80mm



C Halfplanes

180.0 ——— 0.0
 270.0 ——— 90.0



| | | | | | |
|------------------|---------------|-------------------|---------------|-------------|----------|
| Luminaire | | Measur. | | Lamp | |
| Code | 05-1808 | Code | 05-1808 | Code | LED |
| Name | WALL FIXTURES | Name | WALL FIXTURES | Number | 1 |
| Line | Eulumdat | Date | 13-10-2012 | Position | |
| Efficiency | 49.11% | Coordinate system | CG | Total Flux | 87.40 lm |

UGR
S = 0.250

| Reflectancies | | | | | | | | | | |
|----------------|-----------------|------|------|------|------|---------------|------|------|------|------|
| Ceiling/Cavity | 0.7 | 0.7 | 0.5 | 0.5 | 0.3 | 0.7 | 0.7 | 0.5 | 0.5 | 0.3 |
| Walls | 0.5 | 0.3 | 0.5 | 0.3 | 0.3 | 0.5 | 0.3 | 0.5 | 0.3 | 0.3 |
| WorkingPlane | 0.2 | 0.2 | 0.2 | 0.2 | 0.2 | 0.2 | 0.2 | 0.2 | 0.2 | 0.2 |
| RoomDimensions | ViewedCrosswise | | | | | ViewedEndwise | | | | |
| x=2H y=2H | 9.3 | 10.9 | 9.6 | 11.1 | 8.4 | 6.3 | 7.9 | 6.6 | 8.1 | 8.4 |
| x=2H y=3H | 10.7 | 12.1 | 11.0 | 12.4 | 8.8 | 6.7 | 8.2 | 7.1 | 8.4 | 8.8 |
| x=2H y=4H | 11.0 | 12.4 | 11.4 | 12.7 | 8.7 | 6.7 | 8.1 | 7.1 | 8.4 | 8.7 |
| x=2H y=6H | 11.0 | 12.3 | 11.4 | 12.6 | 8.5 | 6.6 | 7.9 | 7.0 | 8.2 | 8.5 |
| x=2H y=8H | 11.0 | 12.2 | 11.4 | 12.5 | 8.5 | 6.6 | 7.8 | 6.9 | 8.1 | 8.5 |
| x=2H y=12H | 11.0 | 12.2 | 11.4 | 12.5 | 8.4 | 6.5 | 7.7 | 6.9 | 8.0 | 8.4 |
| x=4H y=2H | 9.5 | 10.9 | 9.8 | 11.2 | 9.5 | 7.5 | 8.9 | 7.8 | 9.2 | 9.5 |
| x=4H y=3H | 10.9 | 12.1 | 11.3 | 12.4 | 9.7 | 7.8 | 9.0 | 8.2 | 9.3 | 9.7 |
| x=4H y=4H | 11.3 | 12.4 | 11.7 | 12.7 | 9.6 | 7.8 | 8.9 | 8.2 | 9.2 | 9.6 |
| x=4H y=6H | 11.4 | 12.3 | 11.8 | 12.7 | 9.5 | 7.7 | 8.7 | 8.2 | 9.1 | 9.5 |
| x=4H y=8H | 11.3 | 12.2 | 11.8 | 12.6 | 9.4 | 7.7 | 8.6 | 8.1 | 9.0 | 9.4 |
| x=4H y=12H | 11.3 | 12.1 | 11.8 | 12.5 | 9.3 | 7.7 | 8.5 | 8.1 | 8.9 | 9.3 |
| x=8H y=4H | 11.2 | 12.1 | 11.7 | 12.5 | 13.0 | 11.3 | 12.2 | 11.8 | 12.6 | 13.0 |
| x=8H y=6H | 11.4 | 12.1 | 11.8 | 12.5 | 12.9 | 11.3 | 12.0 | 11.8 | 12.5 | 12.9 |
| x=8H y=8H | 11.3 | 11.9 | 11.8 | 12.4 | 12.8 | 11.3 | 11.9 | 11.7 | 12.3 | 12.8 |
| x=8H y=12H | 11.3 | 11.8 | 11.8 | 12.3 | 12.8 | 11.2 | 11.8 | 11.7 | 12.3 | 12.8 |
| x=12H y=4H | 11.2 | 12.0 | 11.7 | 12.4 | 14.0 | 12.3 | 13.1 | 12.8 | 13.5 | 14.0 |
| x=12H y=6H | 11.3 | 11.9 | 11.8 | 12.4 | 13.8 | 12.3 | 12.9 | 12.7 | 13.4 | 13.8 |
| x=12H y=8H | 11.3 | 11.8 | 11.8 | 12.3 | 13.8 | 12.3 | 12.8 | 12.7 | 13.3 | 13.8 |

| | | |
|--------------------|--------------------|-------------|
| Luminaire | Measur. | Lamp |
| Code 05-1808 | Code 05-1808 | Code LED |
| Name WALL FIXTURES | Name WALL FIXTURES | Number 1 |
| Line Eulumdat | Date 13-10-2012 | Position |

| | | |
|-------------------|----------------------|---------------------|
| Efficiency 49.11% | Coordinate system CG | Total Flux 87.40 lm |
|-------------------|----------------------|---------------------|

Total Flux= 87.40 Luminaire Flux= 42.92

| | | | | | | | | | | | | |
|-----|------|------|------|------|------|------|------|------|------|------|-------|-------|
| RI | 0.60 | 0.80 | 1.00 | 1.25 | 1.50 | 2.00 | 2.50 | 3.00 | 4.00 | 5.00 | 10.00 | 20.00 |
| DRR | 0.24 | 0.29 | 0.35 | 0.41 | 0.47 | 0.56 | 0.63 | 0.69 | 0.76 | 0.81 | 0.92 | 0.97 |
| RC | 7 | 7 | 7 | 7 | 7 | 7 | 7 | 7 | 7 | 7 | 6 | 3 |

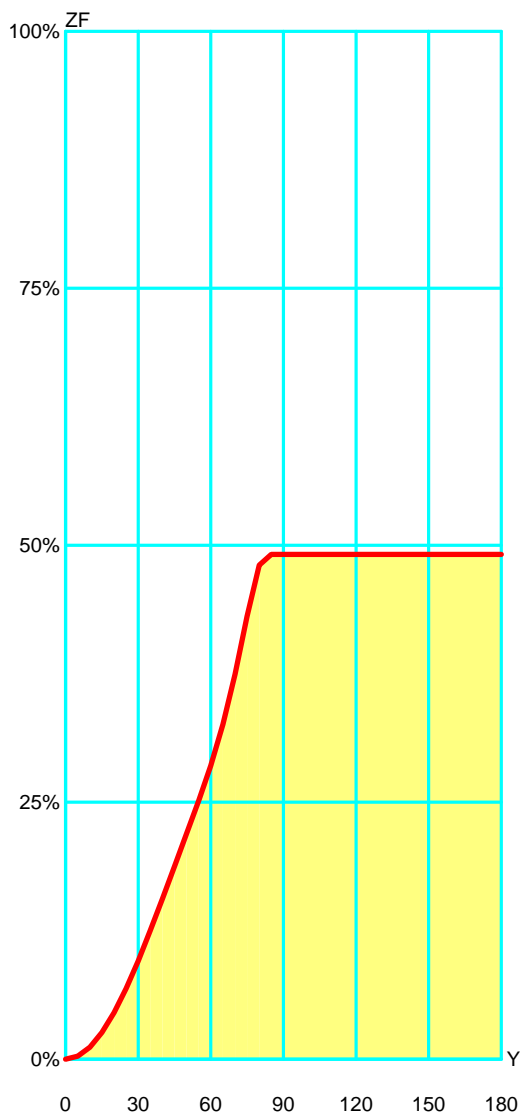
Zonal Flux per 1000 Lumen

| | | | | | | | | | | | | | | | | | | |
|-------|----|----|----|-----|-----|-----|-----|-----|-----|-----|-----|-----|-----|-----|-----|-----|-----|-----|
| Y° | 10 | 20 | 30 | 40 | 50 | 60 | 70 | 80 | 90 | 100 | 110 | 120 | 130 | 140 | 150 | 160 | 170 | 180 |
| ZF(Y) | 12 | 45 | 96 | 156 | 220 | 286 | 375 | 481 | 491 | 491 | 491 | 491 | 491 | 491 | 491 | 491 | 491 | 491 |

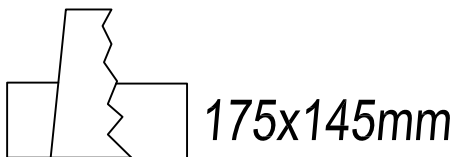
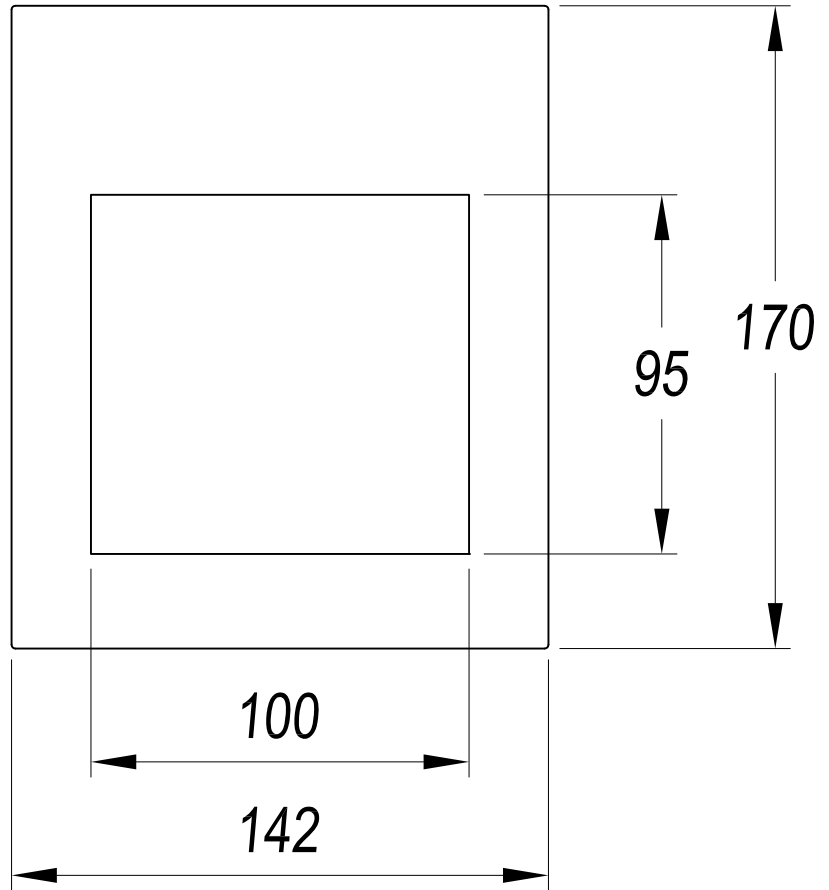
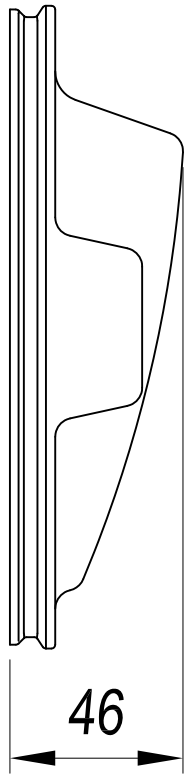
CIE Flux Codes

34 58 91 100 49

| | | | |
|------------|---------------------|------|-------------|
| C.I.E. | 7/7/7/7/7/7/7/7/6/3 | LOR | 49.11298 % |
| D DIN 5040 | A20 | ULOR | 0.00000 % |
| F UTE | 0.49 H | DLOR | 49.11298 % |
| B NBN | BZ 6 | UFF | 0.00000 % |
| RN | 0.00000 % | DFF | 100.00000 % |
| BLF | 1.0 | FFR | 0.00000 % |

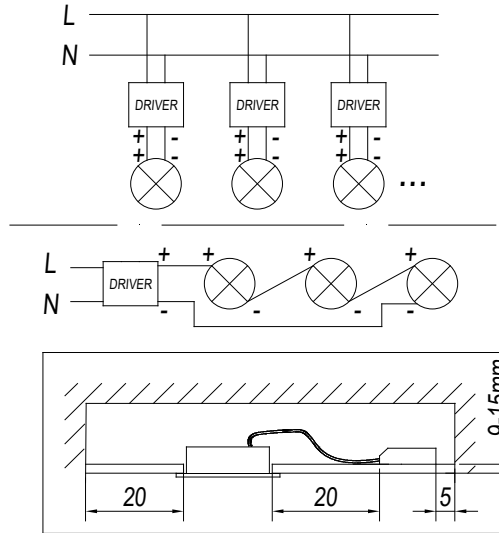
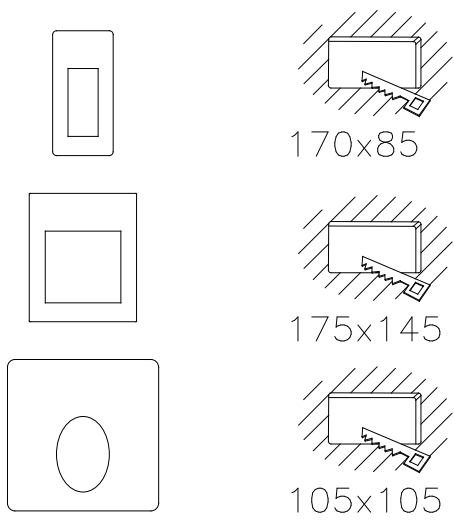


| Zonal Flux | | | | |
|------------|-------|--------|----------|----------|
| Gamma ° | Flux | Sum lm | Flux [%] | Sum [%] |
| 0° | 0.00 | 0.00 | 0.00% | 0.00 % |
| 5° | 2.96 | 2.96 | 0.60 % | 0.60 % |
| 10° | 8.79 | 11.75 | 1.79 % | 2.39 % |
| 15° | 14.28 | 26.03 | 2.91 % | 5.30 % |
| 20° | 19.23 | 45.26 | 3.92 % | 9.22 % |
| 25° | 23.49 | 68.75 | 4.78 % | 14.00 % |
| 30° | 26.93 | 95.68 | 5.48 % | 19.48 % |
| 35° | 29.45 | 125.13 | 6.00 % | 25.48 % |
| 40° | 30.98 | 156.10 | 6.31 % | 31.78 % |
| 45° | 31.64 | 187.75 | 6.44 % | 38.23 % |
| 50° | 31.81 | 219.56 | 6.48 % | 44.70 % |
| 55° | 32.09 | 251.65 | 6.53 % | 51.24 % |
| 60° | 33.99 | 285.64 | 6.92 % | 58.16 % |
| 65° | 40.09 | 325.73 | 8.16 % | 66.32 % |
| 70° | 48.84 | 374.57 | 9.94 % | 76.27 % |
| 75° | 56.40 | 430.97 | 11.48 % | 87.75 % |
| 80° | 49.67 | 480.64 | 10.11 % | 97.86 % |
| 85° | 10.49 | 491.13 | 2.14 % | 100.00 % |
| 90° | 0.00 | 491.13 | 0.00 % | 100.00 % |
| 95° | 0.00 | 491.13 | 0.00 % | 100.00 % |
| 100° | 0.00 | 491.13 | 0.00 % | 100.00 % |
| 105° | 0.00 | 491.13 | 0.00 % | 100.00 % |
| 110° | 0.00 | 491.13 | 0.00 % | 100.00 % |
| 115° | 0.00 | 491.13 | 0.00 % | 100.00 % |
| 120° | 0.00 | 491.13 | 0.00 % | 100.00 % |
| 125° | 0.00 | 491.13 | 0.00 % | 100.00 % |
| 130° | 0.00 | 491.13 | 0.00 % | 100.00 % |
| 135° | 0.00 | 491.13 | 0.00 % | 100.00 % |
| 140° | 0.00 | 491.13 | 0.00 % | 100.00 % |
| 145° | 0.00 | 491.13 | 0.00 % | 100.00 % |
| 150° | 0.00 | 491.13 | 0.00 % | 100.00 % |
| 155° | 0.00 | 491.13 | 0.00 % | 100.00 % |
| 160° | 0.00 | 491.13 | 0.00 % | 100.00 % |
| 165° | 0.00 | 491.13 | 0.00 % | 100.00 % |
| 170° | 0.00 | 491.13 | 0.00 % | 100.00 % |
| 175° | 0.00 | 491.13 | 0.00 % | 100.00 % |
| 180° | 0.00 | 491.13 | 0.00 % | 100.00 % |

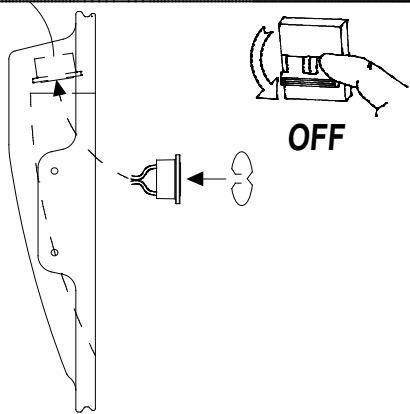


ESCALA 1:2

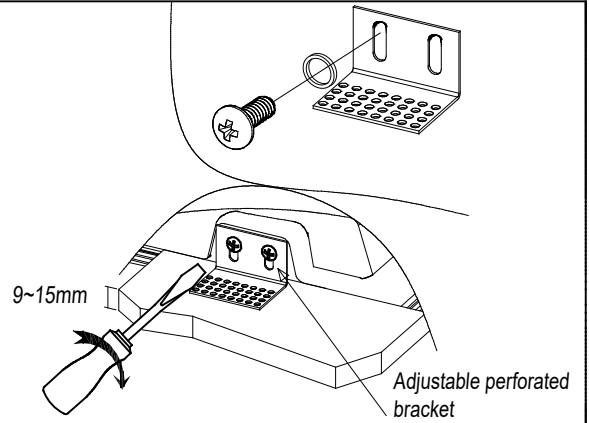
1



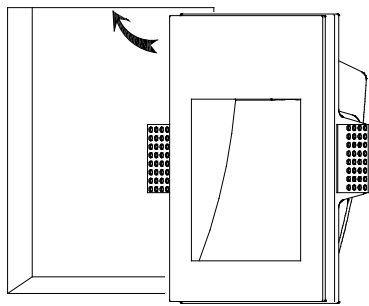
2



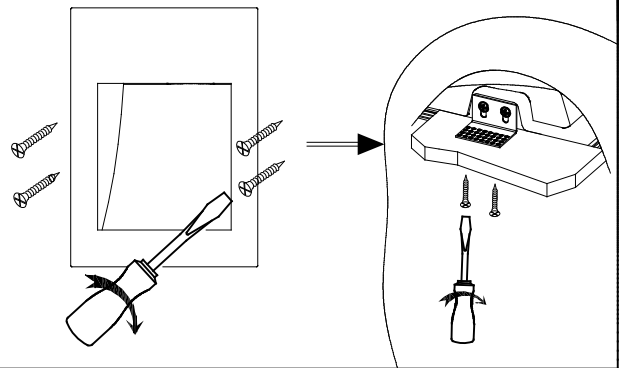
3



4



5



6

