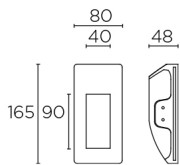


05-1804-14-00

V0

Secret A Signalling



170x85

9-15

Description

Signalling Secret A 1W 3000K CRI 80 White IP20 69lm

	Finish	Material
Structure	White	Plaster

IP20 MEDIUM 29° 8

TECHNICAL CHARACTERISTICS

Light source

Light source: LED CREE
 Light source power (W): 1W
 Luminaire total power (W): 1W
 Color temperature: LED warm-white
 3000K
 CRI: 80
 Photobiological risk: RG2
 Real Lumen: 69
 Qty Leds: 1
 Lm/Real W: 69
 Life Time: 50.000h L80B20
 Bin / Grup: 7C1/7B4
 MacAdam steps: 3
 UGR: 2.4
 Luminance C0°65°: 6886.3
 Luminance 90°65°: 287.7

GEAR

This item requires gear. It is not included.
 Voltage / Frequency: 3V/Max. 350mA

Luminaire

Warranty: 5 Years

Logistics

Energy Efficiency: LED A++
 EAN Code: 8435381400750
 Net Weight (Kg): 0.53
 Weight in Kg (packaged): 0.66
 Packing: 210 x 130 x 100
 Masterbox: 8

The photograph may not match the reference exactly. Please read the product description to identify the finish.

LEDS C4²

Luminaire

Code 05-1804-14-00
Name SECRET

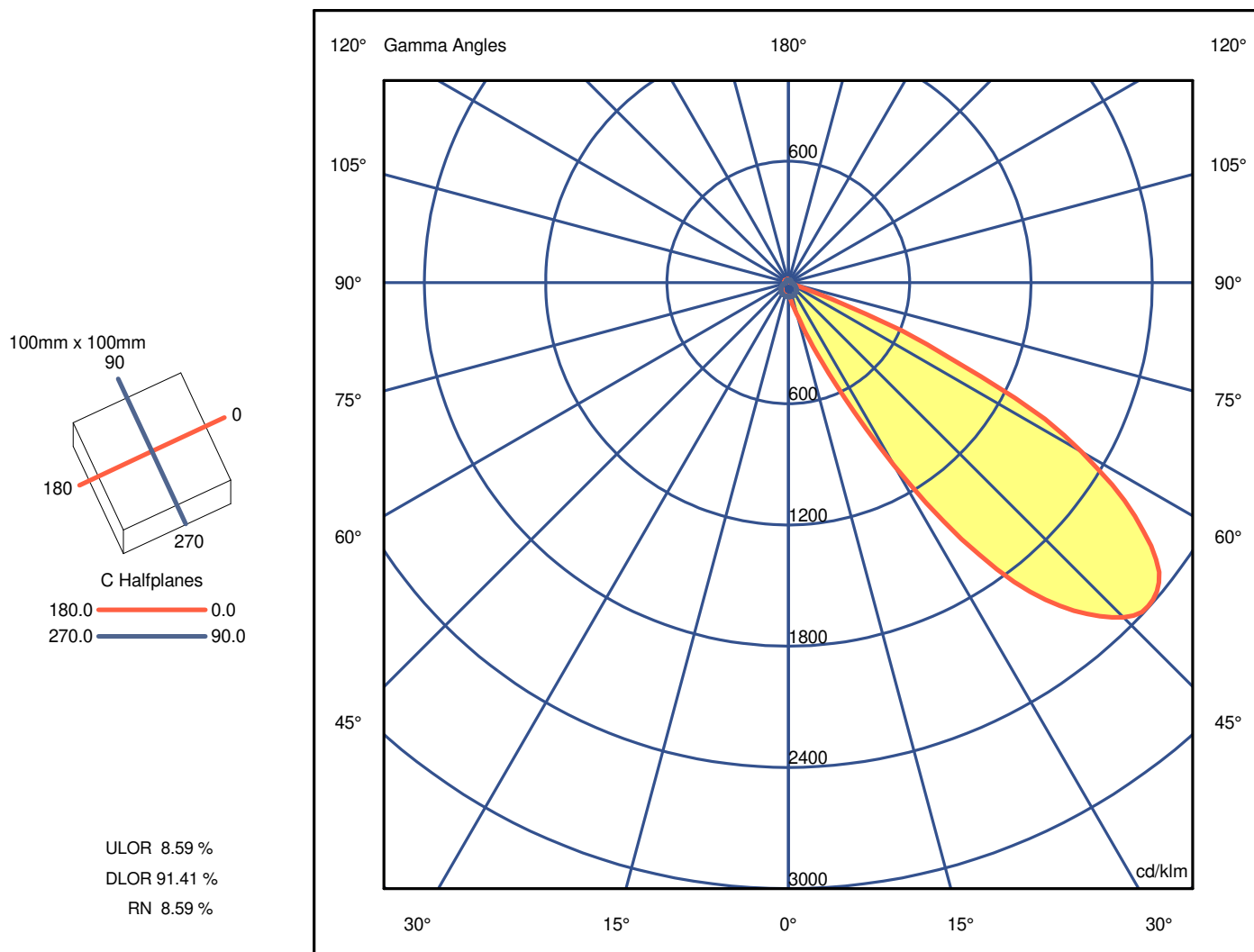
Measurement

Code 05-1804-14-00
Name SECRET

Luminaire Flux	68.99 lm	Luminaire Power	2.30 W	Efficacy	30.00 lm/W	Efficiency	100.00%
Sources Flux	68.99 lm	Maximum value	2393.46 cd/klm	Position	C=0.00 G=48.00	CG	Asymmetrical
Rectangular Luminaire		Length	100 mm	Width	100 mm	Height	50 mm
Rectangular Luminous Area		Length	100 mm	Width	100 mm	Height	50 mm
Horizontal Luminous Area		0.010000 m2		Emitting area on Plane 180°		0.005000 m2	
Emitting area on Plane 0°		0.005000 m2		Emitting area on Plane 270°		0.005000 m2	
Emitting area on Plane 90°		0.005000 m2		Glare area at 76°		0.007271 m2	
Coordinate system		CG		Symmetry Type		Asymmetrical	
Date		15-11-2013		Maximum Gamma Angle		180	
Measurement Distance		0.00		Measurement Flux		68.99 lm	
Operator				Rated Voltage			
Temperature		25.00 °C		Rated Current			
Humidity		60.00 %		Photocell			
Notes							

Luminaire Sources

Line	Code	Name	Flux [lm]	Pow. [W]	Q.ty
	05-1804-14-00	05-1804-14-00	68.99	2.30	1
C.I.E.	33 83 97 91 100	D DIN 5040	A21		
F UTE	0.91 I + 0.09 T	B NBN	BZ 6 / 1 / BZ 5		



LEDS C4

Luminaire

Code 05-1804-14-00
 Name SECRET
Measurement
 Code 05-1804-14-00
 Name SECRET

Luminaire Flux	68.99 lm	Luminaire Power	2.30 W	Efficacy	30.00 lm/W	Efficiency	100.00%
Sources Flux	68.99 lm	Maximum value	2393.46 cd/klm	Position	C=0.00 G=48.00	CG Asymmetrical	

Luminous Intensity Table cd/klm Table 1/3

	C 0.00	C 30.00	C 60.00	C 90.00	C 120.00	C 150.00	C 180.00	C 210.00	C 240.00	C 270.00	C 300.00	C 330.00
G 0.0	66.72	66.72	66.72	66.72	66.72	66.72	66.72	66.72	66.72	66.72	66.72	66.72
G 1.0	67.11	64.36	63.78	68.41	72.04	70.59	67.40	63.34	59.72	71.17	70.59	71.02
G 2.0	67.54	63.92	61.17	70.88	70.15	70.01	66.38	63.34	62.47	70.88	72.47	71.02
G 3.0	69.86	65.66	60.44	72.47	70.01	66.82	67.69	62.91	58.99	69.28	72.62	67.98
G 4.0	71.31	67.40	63.92	69.57	71.31	70.30	67.54	61.89	58.99	71.17	71.17	68.99
G 5.0	71.75	68.27	64.07	69.43	71.60	68.99	65.95	62.91	58.99	71.02	71.31	74.07
G 6.0	76.82	71.02	61.60	71.75	70.44	66.53	65.66	62.62	61.46	68.99	73.78	75.08
G 7.0	81.02	74.94	62.33	71.75	69.86	66.82	65.66	62.33	61.75	68.56	73.20	73.34
G 8.0	86.24	77.11	65.22	68.41	71.02	66.53	68.12	61.46	57.83	70.30	71.02	79.72
G 9.0	94.21	82.33	63.92	68.41	71.46	69.86	65.08	62.62	58.56	70.15	73.34	82.91
G 10.0	106.68	90.88	63.34	71.31	70.01	66.67	65.08	61.75	61.17	68.12	73.34	84.07
G 11.0	115.23	97.98	67.11	71.75	69.86	67.25	67.54	61.02	60.73	68.99	71.75	90.16
G 12.0	124.07	106.10	68.41	67.83	70.88	69.28	66.96	62.91	57.83	68.70	72.18	100.45
G 13.0	136.97	115.52	66.53	67.54	70.30	68.99	64.93	62.76	61.02	67.98	74.07	108.56
G 14.0	148.42	123.20	70.15	70.30	68.56	64.93	63.63	61.02	60.73	67.83	71.46	112.04
G 15.0	162.19	129.00	70.59	67.40	69.57	68.85	66.24	60.59	58.27	67.54	72.47	123.49
G 16.0	178.86	138.13	69.28	69.86	70.01	68.27	63.34	61.75	59.86	67.83	73.49	132.04
G 17.0	203.36	150.02	70.15	69.57	68.27	64.65	62.76	59.28	59.43	66.82	73.34	140.45
G 18.0	231.19	160.45	72.62	70.30	67.83	64.21	64.07	58.99	59.28	67.11	71.46	147.12
G 19.0	264.23	172.19	73.20	65.80	68.70	67.11	63.78	60.59	56.82	66.24	71.75	156.25
G 20.0	298.58	182.63	71.17	69.72	68.41	66.24	61.46	58.85	56.09	66.09	73.05	171.47
G 21.0	339.17	200.89	71.75	70.15	66.67	62.76	61.17	59.86	59.72	66.24	73.20	181.47
G 22.0	381.35	216.98	73.63	65.51	66.82	62.76	63.34	57.11	55.08	65.37	71.75	196.69
G 23.0	431.35	234.23	73.92	65.37	66.53	65.08	62.04	59.28	55.08	65.22	72.62	217.85
G 24.0	491.65	258.44	70.73	68.41	67.40	64.21	59.28	59.28	57.40	65.51	71.75	237.85
G 25.0	557.45	282.79	73.20	67.98	65.37	61.46	59.14	55.08	56.53	64.07	68.99	258.58
G 26.0	635.29	303.80	72.04	64.07	65.51	63.05	61.31	54.93	53.05	63.78	68.85	282.79
G 27.0	720.95	326.41	68.99	63.63	65.51	62.47	57.98	57.25	52.47	64.07	69.57	314.09
G 28.0	821.40	353.52	67.40	66.53	63.63	60.01	57.54	53.34	55.80	63.92	68.85	341.20
G 29.0	924.74	377.29	66.96	63.34	64.36	61.60	59.57	53.34	51.74	63.63	66.09	365.69
G 30.0	1042.00	398.16	67.69	61.89	63.63	61.17	56.09	56.38	51.89	61.89	65.37	395.26
G 31.0	1159.84	423.24	65.66	64.79	64.07	60.44	55.66	55.51	54.93	61.46	65.95	429.32
G 32.0	1286.96	450.78	61.75	64.93	61.31	58.41	55.22	51.74	53.77	62.04	64.65	458.31
G 33.0	1408.71	473.10	63.05	61.60	61.02	56.53	55.53	50.88	49.72	60.01	62.33	489.91
G 34.0	1531.33	492.23	61.46	60.88	60.73	58.99	55.80	53.63	49.57	59.43	63.05	525.86
G 35.0	1643.23	512.67	58.56	62.91	59.72	56.09	53.34	50.44	51.31	60.30	62.33	558.03
G 36.0	1753.24	533.54	56.53	59.57	59.14	55.22	54.64	49.72	47.98	59.72	59.14	588.18
G 37.0	1853.69	546.87	57.83	58.85	57.83	56.38	54.21	51.60	47.98	57.11	58.56	622.53
G 38.0	1940.80	559.48	56.53	61.31	57.83	54.50	51.46	51.60	49.86	56.38	59.72	649.78
G 39.0	2020.23	572.38	52.61	60.15	56.24	53.19	53.05	46.67	49.57	58.85	58.41	673.70
G 40.0	2088.06	579.63	54.21	56.53	55.95	54.21	51.89	45.80	44.93	54.79	55.22	696.17
G 41.0	2151.69	580.65	54.21	58.70	55.66	53.48	49.43	49.72	48.41	54.21	54.50	717.04
G 42.0	2206.77	582.96	53.19	58.27	54.06	50.30	48.27	45.08	47.83	53.48	56.09	731.97
G 43.0	2257.65	580.79	50.01	54.50	54.79	50.88	49.72	44.50	44.06	55.51	54.93	742.98
G 44.0	2303.45	579.05	50.01	54.35	53.34	50.73	48.99	43.63	43.19	52.03	52.76	746.75
G 45.0	2342.87	569.19	50.88	52.76	52.47	49.86	46.09	46.96	45.66	50.59	52.03	744.72
G 46.0	2373.17	562.38	47.98	55.37	51.31	48.56	47.83	42.47	45.80	52.90	52.90	735.30
G 47.0	2390.85	546.58	47.98	51.89	50.15	48.12	46.53	41.16	41.31	52.76	50.59	711.96
G 48.0	2393.46	524.99	48.99	51.60	48.56	46.96	44.64	44.64	43.77	48.85	50.01	681.82
G 49.0	2390.42	493.53	47.98	52.61	48.56	46.38	43.63	40.73	43.34	47.83	49.43	642.10
G 50.0	2378.39	469.62	45.80	50.01	48.12	45.95	45.37	39.57	39.13	50.73	50.73	598.47
G 51.0	2357.66	446.72	45.22	48.99	46.82	45.08	41.89	41.60	37.83	45.95	47.54	550.50
G 52.0	2326.35	419.47	46.67	49.72	46.09	43.05	41.60	41.45	40.87	45.22	47.54	510.06
G 53.0	2276.78	390.04	46.53	49.43	45.66	43.19	42.03	37.54	36.96	44.50	48.41	472.08
G 54.0	2216.19	364.97	43.63	46.38	44.50	41.74	40.58	39.71	36.96	45.95	47.69	433.24
G 55.0	2143.14	340.33	43.05	45.22	42.76	40.87	38.56	39.42	39.71	45.95	47.40	393.67
G 56.0	2067.77	308.73	43.77	46.38	41.74	40.58	38.56	38.56	38.84	40.73	44.93	339.31
G 57.0	1981.53	265.68	43.05	45.80	41.31	40.00	37.98	34.64	37.83	40.15	44.06	269.45
G 58.0	1887.61	213.21	40.58	43.05	40.73	38.56	37.54	36.38	34.21	43.34	45.37	202.49
G 59.0	1779.91	162.19	40.00	43.19	39.57	37.83	35.37	35.66	36.82	38.56	42.03	144.80
G 60.0	1671.49	119.58	41.16	42.47	38.84	37.54	35.80	32.32	35.80	37.69	40.87	102.62
G 61.0	1559.60	81.31	40.15	40.44	37.40	36.24	34.35	31.74	31.02	36.82	39.57	71.02
G 62.0	1435.96	57.11	37.54	39.57	37.25	34.93	33.48	33.19	30.87	39.71	41.60	51.31
G 63.0	1257.68	46.67	36.09	39.71	36.24	34.50	32.47	32.32	33.77	38.70	37.98	40.29
G 64.0	1056.50	39.86	38.12	38.56	34.79	34.50	32.03	29.57	32.76	34.64	37.54	35.95
G 65.0	874.16	36.38	36.96	36.53	34.21	32.76	31.45	29.28	28.70	32.61	38.27	35.37
G 66.0	749.65	35.22	33.34	35.66	33.05	31.45	30.00	30.58	30.87	35.08	36.09	34.93
G 67.0	610.36	35.80	32.47	35.37	32.61	31.45	29.86	27.25	30.00	34.21	35.80	32.03
G 68.0	417.29	35.08	33.92	34.06	32.03	30.87	29.28	27.10	26.52	30.15	31.60	31.16
G 69.0	232.06	32.76	33.48	32.47	30.44	27.83	28.12	26.09	26.52	29.71	32.47	32.03
G 70.0	103.20	33.05	30.73	31.45	29.86	27.10	26.81	26.52	25.08	32.03	32.47	31.31
G 71.0	41.89	32.32	29.13	31.16	28.55	27.10	25.51	26.67	27.68	30.58	32.18	30.15
G 72.0	31.16	31.60	29.86	29.86	27.25	26.52	24.93	24.06	23.77	27.10	28.70	28.70

LEDS C4[®]

Luminaire

Code 05-1804-14-00

Name SECRET

Measurement

Code 05-1804-14-00

Name SECRET

Luminaire Flux	68.99 lm	Luminaire Power	2.30 W	Efficacy	30.00 lm/W	Efficiency	100.00%
Sources Flux	68.99 lm	Maximum value	2393.46 cd/klm	Position	C=0.00 G=48.00	CG Asymmetrical	

Luminous Intensity Table cd/klm Table 2/3

	C 0.00	C 30.00	C 60.00	C 90.00	C 120.00	C 150.00	C 180.00	C 210.00	C 240.00	C 270.00	C 300.00	C 330.00
G 73.0	28.70	30.29	28.84	29.86	25.80	23.05	23.92	23.77	22.76	25.51	27.83	29.86
G 74.0	28.41	29.42	25.94	27.97	25.37	22.18	23.19	23.48	25.51	28.12	28.12	28.84
G 75.0	25.80	28.26	25.37	26.38	23.77	22.61	22.47	21.74	24.79	26.81	27.39	27.54
G 76.0	24.93	27.68	23.77	26.23	23.34	21.02	21.31	21.45	21.02	25.51	26.38	25.22
G 77.0	24.35	26.52	25.37	24.79	21.60	18.26	20.73	21.16	20.00	22.18	23.77	24.06
G 78.0	25.37	25.37	23.92	23.34	20.87	17.10	21.31	20.29	23.05	21.31	23.05	24.35
G 79.0	24.64	24.35	21.16	22.03	20.58	17.68	18.84	18.99	22.03	23.19	23.34	23.19
G 80.0	21.60	23.19	20.00	23.19	20.15	16.23	18.41	17.83	18.84	21.74	21.60	21.60
G 81.0	20.73	20.87	18.70	21.60	19.28	13.48	19.42	18.70	16.67	18.84	19.42	20.29
G 82.0	21.60	20.87	19.86	20.58	18.41	12.32	18.84	17.54	19.71	17.39	18.70	18.41
G 83.0	20.29	19.57	19.13	17.68	17.97	14.06	16.96	16.81	18.84	18.84	18.12	17.97
G 84.0	16.38	16.81	16.38	17.97	17.10	14.35	16.52	16.38	15.51	17.68	17.39	17.68
G 85.0	16.52	16.23	16.52	17.68	15.65	11.89	17.25	15.07	14.20	14.49	15.36	15.07
G 86.0	17.10	16.09	15.94	15.36	15.36	13.91	15.94	14.78	16.23	14.35	14.20	15.65
G 87.0	15.80	14.78	14.06	14.20	13.77	14.35	14.78	14.35	13.19	14.93	13.62	13.77
G 88.0	13.77	13.62	12.03	14.93	13.33	11.60	15.36	12.90	11.89	13.33	13.04	12.76
G 89.0	10.44	11.74	10.87	14.35	12.61	11.74	16.09	12.32	14.20	12.90	13.04	12.18
G 90.0	10.29	12.47	12.90	11.31	12.32	13.91	12.61	12.47	14.06	11.02	12.03	12.18
G 91.0	13.91	13.77	12.76	11.89	12.76	14.49	13.19	13.19	10.87	12.61	11.60	12.61
G 92.0	11.02	13.19	10.87	13.62	12.90	14.78	13.04	13.48	11.74	12.61	12.32	12.03
G 93.0	10.87	12.03	11.16	13.62	12.18	12.32	15.80	12.61	10.58	11.45	12.61	11.45
G 94.0	10.44	11.16	12.90	14.06	13.48	12.32	15.94	12.47	14.35	11.16	12.18	11.02
G 95.0	14.35	13.91	13.48	11.74	12.18	15.07	13.62	14.35	13.77	12.03	11.60	11.60
G 96.0	14.06	13.77	10.58	11.74	12.03	16.09	13.77	14.35	11.31	12.03	12.47	11.89
G 97.0	10.73	11.16	10.58	13.62	12.03	12.90	16.52	12.18	10.87	12.76	12.03	11.89
G 98.0	11.16	11.45	12.90	14.20	12.61	13.33	17.10	13.04	14.35	11.60	12.18	11.89
G 99.0	13.91	14.49	13.33	11.60	12.61	15.65	14.35	14.35	12.18	12.18	12.18	12.32
G100.0	13.91	14.06	13.04	14.35	12.76	16.38	14.64	15.07	11.60	11.45	12.18	12.32
G101.0	13.91	14.35	11.31	14.06	12.90	13.04	18.55	13.04	14.06	12.32	11.60	12.47
G102.0	10.73	11.02	11.16	14.64	13.19	13.19	18.12	13.77	14.20	12.03	12.32	12.76
G103.0	10.44	11.31	10.73	11.60	13.04	16.96	15.36	15.51	14.93	11.74	12.18	12.32
G104.0	13.77	14.64	12.76	11.02	13.04	17.54	15.51	15.80	12.61	12.03	12.61	11.74
G105.0	13.91	14.64	12.32	14.49	12.90	13.62	18.84	13.62	11.89	11.02	11.02	12.61
G106.0	10.15	11.16	11.31	14.64	12.47	13.91	18.99	13.62	14.49	11.02	11.89	12.03
G107.0	10.00	10.87	10.00	11.45	13.19	13.77	19.13	13.33	13.77	11.45	11.31	12.18
G108.0	11.02	11.02	12.32	11.74	13.04	17.54	15.36	15.94	12.32	12.32	12.76	12.76
G109.0	14.35	13.77	13.19	14.49	13.19	17.97	15.65	16.81	12.18	12.18	13.04	12.32
G110.0	13.62	15.22	11.02	14.78	12.61	13.91	19.42	13.77	14.35	11.74	11.89	12.76
G111.0	10.15	11.02	10.29	10.44	12.76	14.64	18.84	14.49	14.64	11.45	12.61	11.89
G112.0	10.00	11.60	11.02	11.31	12.76	18.12	16.52	17.97	12.61	11.45	13.48	11.89
G113.0	10.29	11.45	12.47	14.93	13.33	14.49	19.86	14.49	12.32	12.18	12.61	12.32
G114.0	13.33	14.93	12.32	14.35	13.04	15.07	19.86	15.22	14.20	13.48	13.62	12.18
G115.0	13.91	14.64	12.76	14.64	13.62	15.36	20.29	14.78	14.35	12.76	11.60	11.74
G116.0	9.71	14.78	11.02	11.31	13.62	18.70	16.52	17.68	13.91	11.02	10.87	12.18
G117.0	10.73	10.44	11.31	11.60	13.19	18.99	16.81	18.84	12.47	12.76	13.33	12.32
G118.0	13.62	11.02	13.48	14.93	13.19	15.80	20.15	15.36	12.47	12.47	13.33	12.47
G119.0	14.35	14.78	12.76	14.20	13.62	16.23	20.29	14.93	14.35	12.76	11.02	11.60
G120.0	14.20	14.93	10.00	11.45	13.48	18.84	16.23	18.41	14.49	11.31	11.02	12.18
G121.0	11.02	14.35	10.87	11.74	13.33	19.57	16.81	18.84	12.61	11.45	10.87	12.18
G122.0	11.60	11.31	10.73	14.20	13.48	20.00	16.09	18.41	13.19	11.02	13.33	12.18
G123.0	14.20	10.87	13.48	15.07	13.48	16.52	20.15	16.23	13.91	12.76	12.61	12.61
G124.0	13.91	14.78	13.19	11.89	14.35	19.13	20.00	15.22	14.35	13.33	13.04	11.89
G125.0	13.77	13.77	13.19	12.18	13.33	19.42	16.09	18.84	12.76	13.19	10.87	11.60
G126.0	13.77	14.78	12.76	11.16	14.06	20.00	16.38	18.26	13.33	10.58	10.87	11.60
G127.0	10.73	11.02	11.02	14.93	13.48	16.52	19.57	16.09	13.04	10.87	11.02	11.74
G128.0	10.00	10.87	10.44	13.77	14.35	16.23	19.71	15.51	14.78	13.33	13.62	12.32
G129.0	14.49	11.02	13.62	15.07	14.06	19.28	18.55	15.65	14.78	13.77	13.62	11.60
G130.0	14.35	15.07	13.48	11.74	13.77	19.42	15.80	18.55	13.77	10.87	10.73	12.18
G131.0	11.16	12.03	10.87	14.78	14.35	16.96	16.52	19.28	13.77	10.29	11.02	12.18
G132.0	10.58	11.60	10.29	14.93	13.77	16.67	19.28	16.67	15.65	11.16	10.58	11.74
G133.0	10.58	11.60	12.32	14.49	13.91	16.52	18.41	16.23	14.06	13.91	13.91	12.32
G134.0	13.19	14.49	12.76	12.18	14.78	19.13	16.23	18.99	14.49	13.04	14.49	12.03
G135.0	14.49	15.36	10.73	11.89	14.20	18.84	16.38	18.99	14.49	10.87	10.29	12.18
G136.0	10.58	14.93	9.42	14.64	14.35	16.96	18.41	16.38	15.22	10.87	10.58	12.18
G137.0	11.02	12.18	10.58	15.36	14.64	15.94	17.68	16.67	15.22	10.44	11.16	12.18
G138.0	11.02	11.89	12.47	11.89	14.35	19.42	15.94	19.57	15.94	14.06	14.49	12.47
G139.0	10.87	11.60	13.19	12.76	14.35	18.55	15.51	19.13	14.93	13.62	14.06	11.74
G140.0	14.49	14.78	13.62	12.18	14.49	16.67	16.09	18.84	15.65	14.35	11.45	12.61
G141.0	10.44	14.78	10.29	14.93	14.78	16.96	17.54	16.67	14.78	10.87	10.87	12.76
G142.0	11.31	12.61	10.58	15.94	14.64	16.23	16.81	16.09	14.64	10.29	11.02	13.19
G143.0	13.62	11.45	14.20	12.03	14.93	19.28	15.94	19.13	14.78	13.91	15.07	12.76
G144.0	13.62	15.22	13.33	12.76	15.07	19.28	15.51	18.26	15.22	14.35	15.07	12.61
G145.0	14.20	14.06	13.04	13.04	15.07	16.67	15.94	18.99	15.22	11.74	11.02	11.60

LEDS C4[®]

Luminaire

Code 05-1804-14-00
Name SECRET

Measurerm.

Code 05-1804-14-00
Name SECRET

Luminaire Flux	68.99 lm	Luminaire Power	2.30 W	Efficacy	30.00 lm/W	Efficiency	100.00%
Sources Flux	68.99 lm	Maximum value	2393.46 cd/klm	Position	C=0.00 G=48.00	CG	Asymmetrical

Luminous Intensity Table cd/klm Table 3/3

	C 0.00	C 30.00	C 60.00	C 90.00	C 120.00	C 150.00	C 180.00	C 210.00	C 240.00	C 270.00	C 300.00	C 330.00
G146.0	11.16	11.60	10.44	15.80	15.22	15.94	16.52	16.96	14.93	10.87	11.31	12.47
G147.0	11.74	11.74	9.86	12.47	14.93	19.57	17.10	18.70	14.64	11.31	14.06	12.32
G148.0	13.77	11.89	13.91	12.76	15.22	19.57	16.52	17.83	15.51	14.35	14.78	12.76
G149.0	13.62	14.06	13.19	14.64	16.23	16.81	17.25	15.80	15.36	14.64	14.49	12.90
G150.0	13.19	14.20	13.48	14.49	15.51	16.38	16.81	15.51	14.64	14.64	9.86	12.76
G151.0	11.31	14.35	10.15	14.20	15.22	15.36	16.52	16.09	14.78	11.45	11.02	12.90
G152.0	11.60	14.35	10.44	14.20	14.64	18.84	16.52	17.39	14.64	11.31	11.16	12.47
G153.0	11.74	12.18	13.77	12.90	15.36	17.83	16.52	17.25	15.65	14.49	14.06	13.19
G154.0	13.48	14.20	12.32	12.32	15.94	17.83	16.96	16.09	15.80	14.64	13.91	12.76
G155.0	14.06	13.91	13.77	15.36	14.78	17.25	16.23	15.94	14.64	10.58	11.45	12.32
G156.0	12.32	14.20	10.73	14.64	14.49	16.67	17.54	15.51	14.20	11.60	11.45	12.18
G157.0	12.18	11.89	10.58	13.91	15.07	17.68	17.25	16.67	15.07	11.16	14.64	12.32
G158.0	11.74	12.47	14.64	13.04	15.51	16.09	17.10	15.51	15.51	15.22	15.07	13.04
G159.0	13.04	13.91	13.19	14.78	15.36	16.38	16.96	15.22	15.80	15.36	14.78	12.47
G160.0	13.04	14.20	11.02	14.78	14.35	15.80	16.23	16.67	14.20	11.02	12.18	12.90
G161.0	12.18	12.32	11.02	13.62	15.22	17.68	17.68	16.96	13.91	11.74	11.16	12.47
G162.0	13.77	13.33	14.06	14.93	15.22	16.52	16.52	15.80	13.91	15.36	13.91	12.18
G163.0	13.77	12.18	13.91	14.49	14.93	16.52	17.25	15.94	15.51	11.74	15.07	13.04
G164.0	12.90	12.76	13.48	14.06	15.51	15.36	15.80	16.09	15.51	11.16	14.35	12.90
G165.0	12.90	12.18	11.02	13.62	14.35	16.38	16.81	16.52	13.04	12.03	12.03	13.19
G166.0	12.61	13.48	11.16	14.64	14.20	15.94	15.65	16.67	13.04	12.18	12.18	12.18
G167.0	12.18	12.32	14.35	13.77	15.65	15.80	17.68	16.38	15.65	12.03	14.64	12.90
G168.0	12.61	12.03	11.02	14.93	15.51	15.65	16.09	15.80	15.22	14.93	15.07	13.19
G169.0	13.62	13.48	13.33	14.20	15.07	15.51	14.35	15.65	13.19	14.64	13.77	13.19
G170.0	13.48	13.77	13.77	14.20	14.35	15.51	14.35	16.09	13.91	11.74	13.77	13.04
G171.0	13.33	12.03	11.45	14.64	15.22	15.51	16.09	15.51	15.07	10.73	14.78	13.19
G172.0	13.62	14.06	14.35	14.93	13.91	14.78	15.51	15.36	15.65	12.18	14.35	12.90
G173.0	13.91	13.62	11.31	14.64	14.06	14.49	16.09	15.07	12.61	12.18	12.61	14.06
G174.0	13.33	13.62	11.02	14.64	13.91	15.22	13.62	16.67	12.76	14.93	12.47	13.91
G175.0	13.62	13.33	11.02	14.93	15.07	14.06	16.09	14.78	15.07	13.04	14.35	13.62
G176.0	14.35	14.49	15.65	14.20	14.06	13.91	12.47	14.20	12.90	12.90	13.91	13.19
G177.0	14.20	13.19	11.89	14.93	13.62	13.33	15.36	13.91	13.33	11.31	13.62	14.49
G178.0	13.62	11.74	14.49	14.20	14.35	13.48	11.60	15.36	15.51	14.64	14.06	14.35
G179.0	13.62	14.78	11.74	14.93	13.04	15.07	15.80	13.62	13.33	15.22	14.20	13.91
G180.0	13.88	13.88	13.88	13.88	13.88	13.88	13.88	13.88	13.88	13.88	13.88	13.88

LEDS C4²

Luminaire

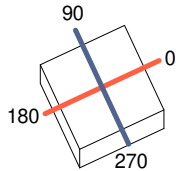
Code 05-1804-14-00
Name SECRET

Measurement

Code 05-1804-14-00
Name SECRET

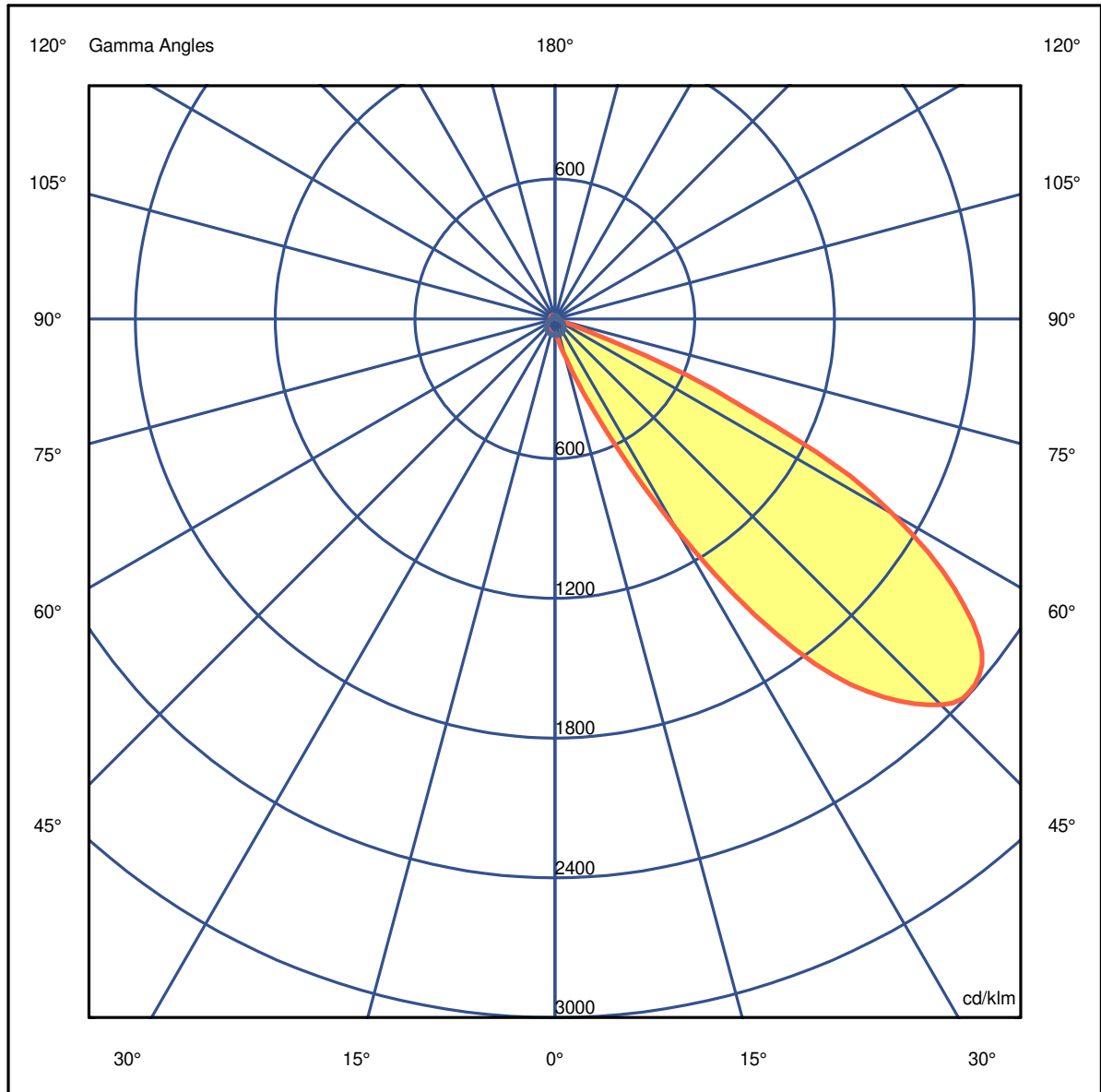
Luminaire Flux	68.99 lm	Luminaire Power	2.30 W	Efficacy	30.00 lm/W	Efficiency	100.00%
Sources Flux	68.99 lm	Maximum value	2393.46 cd/klm	Position	C=0.00 G=48.00	CG	Asymmetrical

100mm x 100mm



C Halfplanes

180.0 ———— 0.0
270.0 ———— 90.0



LEDS C4[®]

Luminaire

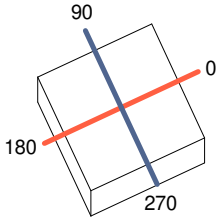
Code 05-1804-14-00
Name SECRET

Measurement

Code 05-1804-14-00
Name SECRET

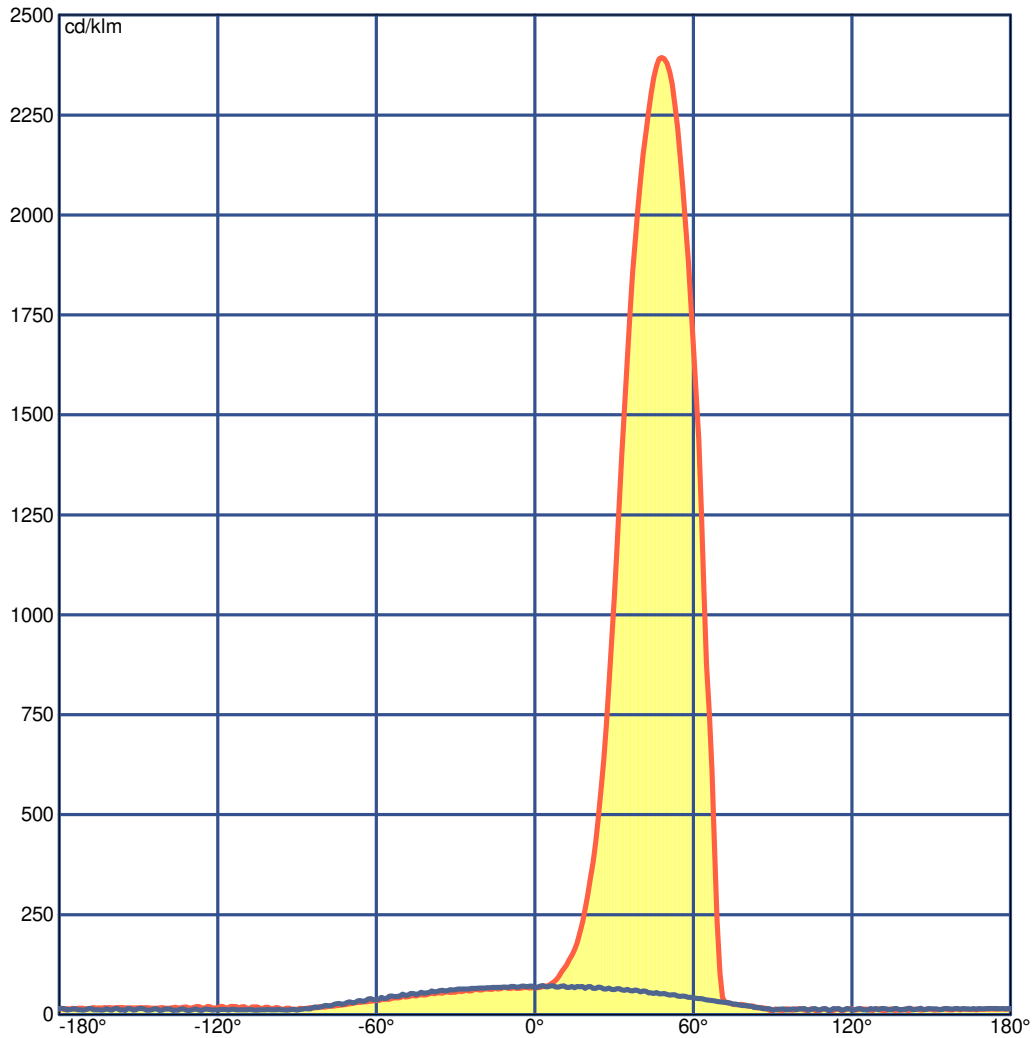
Luminaire Flux	68.99 lm	Luminaire Power	2.30 W	Efficacy	30.00 lm/W	Efficiency	100.00%
Sources Flux	68.99 lm	Maximum value	2393.46 cd/klm	Position	C=0.00 G=48.00	CG	Asymmetrical

100mm x 100mm



C Halfplanes

180.0 ——— 0.0
270.0 ——— 90.0



LEDS C4[®]

Luminaire

Code 05-1804-14-00
Name SECRET

Measurem.

Code 05-1804-14-00
Name SECRET

Luminaire Flux	68.99 lm	Luminaire Power	2.30 W	Efficacy	30.00 lm/W	Efficiency	100.00%
Sources Flux	68.99 lm	Maximum value	2393.46 cd/klm	Position	C=0.00 G=48.00	CG	Asymmetrical

UGR
S = 0.250

Reflectancies										
Ceiling/Cavity	0.7	0.7	0.5	0.5	0.3	0.7	0.7	0.5	0.5	0.3
Walls	0.5	0.3	0.5	0.3	0.3	0.5	0.3	0.5	0.3	0.3
Working Plane	0.2	0.2	0.2	0.2	0.2	0.2	0.2	0.2	0.2	0.2
Room Dimensions	Lateral View					Viewed Endwise				
x=2H y=2H	2.4	3.7	2.8	4.1	4.5	5.3	6.7	5.7	7.1	7.5
x=2H y=3H	4.1	5.3	4.6	5.7	6.2	6.3	7.5	6.7	7.9	8.3
x=2H y=4H	4.9	6.0	5.4	6.5	6.9	6.8	7.9	7.3	8.4	8.8
x=2H y=6H	5.6	6.7	6.1	7.1	7.6	7.4	8.4	7.8	8.8	9.3
x=2H y=8H	6.0	7.0	6.5	7.5	8.0	7.6	8.5	8.1	9.0	9.5
x=2H y=12H	6.4	7.3	6.9	7.8	8.3	7.8	8.7	8.3	9.2	9.7
x=4H y=2H	3.0	4.1	3.5	4.6	5.1	7.2	8.3	7.7	8.8	9.3
x=4H y=3H	5.0	5.9	5.5	6.4	6.9	8.0	8.9	8.5	9.4	9.9
x=4H y=4H	5.9	6.7	6.4	7.2	7.8	8.5	9.3	9.0	9.8	10.3
x=4H y=6H	6.7	7.4	7.3	8.0	8.5	9.0	9.7	9.5	10.2	10.8
x=4H y=8H	7.2	7.8	7.8	8.4	9.0	9.2	9.9	9.8	10.4	11.0
x=4H y=12H	7.6	8.2	8.2	8.8	9.4	9.5	10.1	10.1	10.6	11.2
x=8H y=4H	6.2	6.9	6.8	7.4	8.0	8.6	9.3	9.2	9.8	10.4
x=8H y=6H	7.2	7.8	7.8	8.3	9.0	9.3	9.8	9.9	10.4	11.0
x=8H y=8H	7.8	8.2	8.4	8.8	9.5	9.6	10.1	10.3	10.7	11.4
x=8H y=12H	8.3	8.8	9.0	9.4	10.1	10.0	10.4	10.6	11.0	11.7
x=12H y=4H	6.9	7.5	7.5	8.1	8.7	9.0	9.6	9.6	10.2	10.8
x=12H y=6H	7.8	8.3	8.4	8.9	9.5	9.7	10.1	10.3	10.7	11.4
x=12H y=8H	8.3	8.8	9.0	9.4	10.1	10.0	10.4	10.6	11.0	11.7

LEDS C4⁺

Luminaire

Code 05-1804-14-00
Name SECRET

Measurum.

Code 05-1804-14-00
Name SECRET

Luminaire Flux	68.99 lm	Luminaire Power	2.30 W	Efficacy	30.00 lm/W	Efficiency	100.00%
Sources Flux	68.99 lm	Maximum value	2393.46 cd/klm	Position	C=0.00 G=48.00	CG	Asymmetrical

Total Flux= 68.99 Luminaire Flux= 68.99

RI	0.60	0.80	1.00	1.25	1.50	2.00	2.50	3.00	4.00	5.00	10.00	20.00
DRR	0.16	0.28	0.38	0.48	0.55	0.65	0.71	0.75	0.80	0.83	0.89	0.93
RC	9	7	7	6	6	6	6	6	6	6	7	7

Zonal Flux per 1000 Lumen

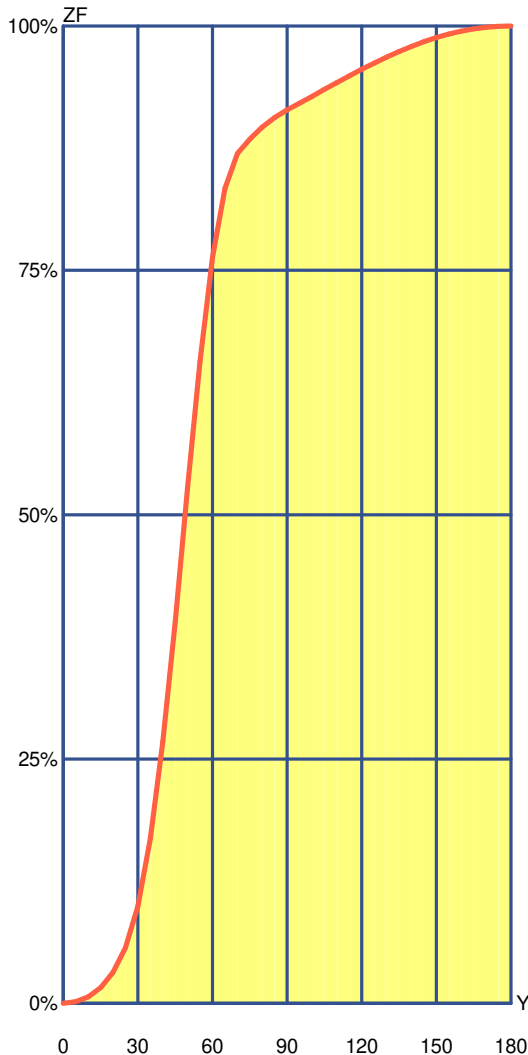
Y°	10	20	30	40	50	60	70	80	90	100	110	120	130	140	150	160	170	180
ZF(Y)	7	32	99	268	527	763	870	897	914	928	942	956	968	979	988	995	999	1000

CIE Flux Codes

33 83 97 91 100

C.I.E. 9/7/7/6/6/6/6/6/7/7
D DIN 5040 A21
F UTE 0.91 I + 0.09 T
B NBN BZ 6 / 1 / BZ 5
RN 8.59236 %
BLF 1.0

LOR 100.00000 %
ULOR 8.59236 %
DLOR 91.40764 %
UFF 8.59236 %
DFF 91.40764 %
FFR 9.40005 %



Gamma °	Zonal Flux			
	Flux	Sum lm	Flux [%]	Sum [%]
0°	0.00	0.00	0.00%	0.00%
5°	1.62	1.62	0.16%	0.16%
10°	5.04	6.66	0.50%	0.67%
15°	9.42	16.08	0.94%	1.61%
20°	15.44	31.51	1.54%	3.15%
25°	25.26	56.77	2.53%	5.68%
30°	42.51	99.28	4.25%	9.93%
35°	69.25	168.54	6.93%	16.85%
40°	99.36	267.90	9.94%	26.79%
45°	123.53	391.43	12.35%	39.14%
50°	135.69	527.12	13.57%	52.71%
55°	129.69	656.81	12.97%	65.68%
60°	106.29	763.10	10.63%	76.31%
65°	70.88	833.97	7.09%	83.40%
70°	35.72	869.69	3.57%	86.97%
75°	14.80	884.49	1.48%	88.45%
80°	12.16	896.65	1.22%	89.66%
85°	9.81	906.46	0.98%	90.65%
90°	7.61	914.08	0.76%	91.41%
95°	6.90	920.98	0.69%	92.10%
100°	7.03	928.01	0.70%	92.80%
105°	7.13	935.13	0.71%	93.51%
110°	6.94	942.07	0.69%	94.21%
115°	6.85	948.92	0.69%	94.89%
120°	6.74	955.66	0.67%	95.57%
125°	6.50	962.16	0.65%	96.22%
130°	6.07	968.23	0.61%	96.82%
135°	5.65	973.88	0.57%	97.39%
140°	5.20	979.08	0.52%	97.91%
145°	4.78	983.86	0.48%	98.39%
150°	4.22	988.08	0.42%	98.81%
155°	3.60	991.68	0.36%	99.17%
160°	2.98	994.66	0.30%	99.47%
165°	2.34	997.00	0.23%	99.70%
170°	1.67	998.67	0.17%	99.87%
175°	1.00	999.67	0.10%	99.97%
180°	0.33	1000.00	0.03%	100.00%

LEDS C4[®]

Luminaire

Code 05-1804-14-00

Name SECRET

Measurement

Code 05-1804-14-00

Name SECRET

Luminaire Flux	68.99 lm	Luminaire Power	2.30 W	Efficacy	30.00 lm/W	Efficiency	100.00%
Sources Flux	68.99 lm	Maximum value	2393.46 cd/klm	Position	C=0.00 G=48.00	CG	Asymmetrical

Utilizations CIE

Mounting	Direct	Normalization		Normalised		Suspension Ratid/3						Standard CIE Settings											
Ceiling																							
K	8873	8773	8871	8771	7773	7771	7753	7553	7751	7551	7731	7331	7711	7111	5551	5531	5331	5511	5111	3331	3311	1111	0000
0.60	293	263	256	231	250	221	169	144	153	130	106	80	73	50	122	86	76	60	48	72	50	43	32
0.80	328	301	268	247	286	236	201	176	169	148	121	96	84	62	139	100	91	71	59	86	61	54	38
1.00	351	327	270	253	311	242	226	202	178	160	130	107	93	72	150	111	102	80	68	97	70	63	43
1.25	370	349	266	252	332	242	251	228	184	168	139	118	103	82	158	121	112	90	79	107	81	73	48
1.50	384	365	261	249	348	240	272	250	187	174	145	127	111	92	164	128	120	99	88	115	89	81	52
2.00	402	387	250	241	369	233	302	283	190	179	154	138	123	106	170	139	132	112	102	126	103	95	57
2.50	415	401	242	236	383	229	324	307	192	183	160	147	133	117	174	146	140	122	113	135	113	105	61
3.00	424	412	237	231	394	225	341	325	193	185	164	153	140	126	177	152	147	130	121	141	121	114	64
4.00	436	427	230	226	409	220	364	351	194	188	171	161	149	138	181	160	155	140	133	150	133	126	69
5.00	445	437	226	223	419	218	380	369	195	191	175	167	156	146	183	165	161	148	142	156	140	134	72
10.00	462	458	216	215	440	211	415	409	197	194	183	179	171	165	189	176	174	164	161	169	158	153	78
20.00	471	469	209	208	450	205	435	431	196	195	188	186	180	176	190	182	181	174	172	177	169	165	82

Wall

K	8873	8773	8871	8771	7773	7771	7753	7553	7751	7551	7731	7331	7711	7111	5551	5531	5331	5511	5111	3331	3311	1111	0000
0.60	514	498	468	455	489	448	386	374	362	352	303	293	261	253	347	295	291	256	252	289	252	250	231
0.80	568	552	499	488	540	479	439	426	400	389	343	332	300	291	382	332	328	293	289	324	289	285	263
1.00	604	588	516	505	573	495	478	463	423	413	369	358	328	317	404	357	352	320	314	348	314	309	284
1.25	630	615	522	513	597	502	510	495	439	430	390	378	350	340	418	376	371	341	335	365	334	328	299
1.50	650	636	526	518	616	507	535	520	450	442	405	394	368	357	429	390	386	357	351	378	349	342	311
2.00	670	658	522	516	635	505	565	552	459	451	420	410	388	377	437	404	400	376	370	390	365	357	321
2.50	688	677	524	519	652	507	590	577	468	462	434	425	405	395	446	417	413	392	386	402	380	370	332
3.00	702	693	526	522	665	510	610	598	476	470	446	437	419	409	454	428	424	405	399	412	392	381	341
4.00	732	724	540	537	694	525	648	638	497	492	472	464	449	440	474	453	450	433	428	436	419	406	363
5.00	761	754	559	557	723	545	682	673	520	517	498	492	478	470	498	479	476	461	456	461	446	432	387
10.00	876	873	653	652	838	640	811	805	624	621	608	604	594	589	601	588	586	575	572	568	557	541	491
20.00	1000	1000	784	783	981	771	964	961	761	759	750	748	740	737	738	729	728	720	718	709	701	683	630

Working Pl.

K	8873	8773	8871	8771	7773	7771	7753	7553	7751	7551	7731	7331	7711	7111	5551	5531	5331	5511	5111	3331	3311	1111	0000
0.60	471	454	439	425	443	417	317	305	305	295	230	220	175	168	288	220	216	170	166	213	166	163	143
0.80	609	590	561	547	575	535	450	436	430	418	354	341	298	287	407	340	336	289	284	330	283	278	258
1.00	711	692	647	634	671	620	552	536	522	510	450	435	393	381	496	432	427	382	376	420	374	367	347
1.25	806	787	726	714	763	698	652	634	611	598	543	528	489	474	581	523	517	475	468	507	464	456	435
1.50	874	857	781	770	828	752	725	707	674	662	610	595	559	544	642	588	582	543	535	570	530	520	500
2.00	969	953	854	845	920	826	831	812	761	751	707	692	662	646	727	681	675	642	634	660	626	612	593
2.50	1000	1000	896	889	975	869	897	879	814	804	766	752	725	710	778	738	732	703	694	714	684	667	649
3.00	1000	1000	924	918	1000	898	943	927	849	841	807	794	769	754	812	777	772	745	737	751	724	705	687
4.00	1000	1000	957	953	1000	932	1000	988	892	885	857	845	824	811	854	824	820	797	790	796	773	751	733
5.00	1000	1000	976	973	1000	951	1000	1000	917	912	886	877	858	846	878	852	848	828	822	822	802	778	759
10.00	1000	1000	1000	1000	1000	991	1000	1000	970	966	949	943	930	922	929	912	910	896	891	878	864	835	816
20.00	1000	1000	1000	1000	1000	1000	1000	1000	1000	998	987	984	974	970	959	948	947	937	935	912	903	870	851

LM53 SHR C0-C180: 4.712 SHR C90-C270: 1.413 SHR Square: 1.270

LEDS C4[®]

Luminaire

Code 05-1804-14-00
Name SECRET

Measurem.

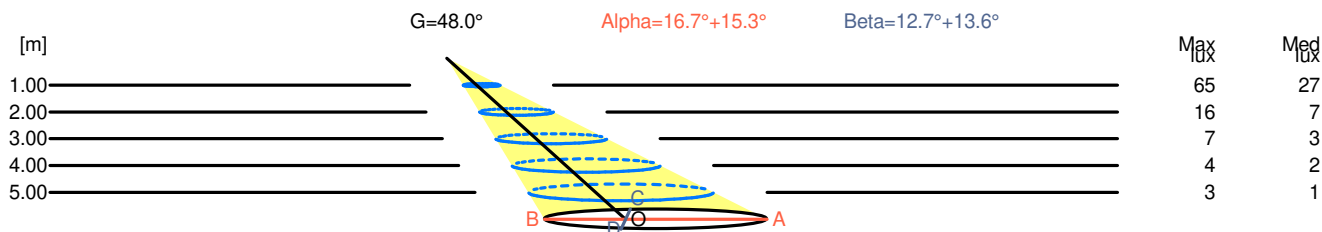
Code 05-1804-14-00
Name SECRET

Luminaire Flux	68.99 lm	Luminaire Power	2.30 W	Efficacy	30.00 lm/W	Efficiency	100.00%
Sources Flux	68.99 lm	Maximum value	2393.46 cd/klm	Position	C=0.00 G=48.00	CG	Asymmetrical

Width at 50.00 % of Max Intensity

H[m]	1.00	2.00	3.00	4.00	5.00	H[m]	1.00	2.00	3.00	4.00	5.00
OA	0.88	1.76	2.63	3.51	4.39	OC	0.34	0.67	1.01	1.35	1.69
OB	0.50	1.01	1.51	2.01	2.51	OD	0.36	0.73	1.09	1.45	1.81

	Luminous Intensities [cd/klm]									
	0	5	15	25	35	45	55	65	75	85
OA	4.60	4.95	11.19	38.46	113.37	161.64	147.86	60.31	1.78	1.14
OB	4.60	4.55	4.57	4.08	3.68	3.18	2.66	2.17	1.55	1.19
OC	4.60	4.79	4.65	4.69	4.34	3.64	3.12	2.52	1.82	1.22
OD	4.60	4.90	4.66	4.42	4.16	3.49	3.17	2.25	1.85	1.00



H[m]	D[m]	Max lux	Med lux	Alpha=16.7°+15.3°	G=48.0
1.00	1.38	65	27		
2.00	2.76	16	7		
3.00	4.14	7	3		
4.00	5.52	4	2		
5.00	6.90	3	1		

H[m]	D[m]	Max lux	Med lux	Beta=13.6°+12.7°	G=0.0
1.00	0.70	65	27		
2.00	1.40	16	7		
3.00	2.10	7	3		
4.00	2.80	4	2		
5.00	3.50	3	1		

LEDS C4²

Luminaire

Code 05-1804-14-00

Name SECRET

Measurement

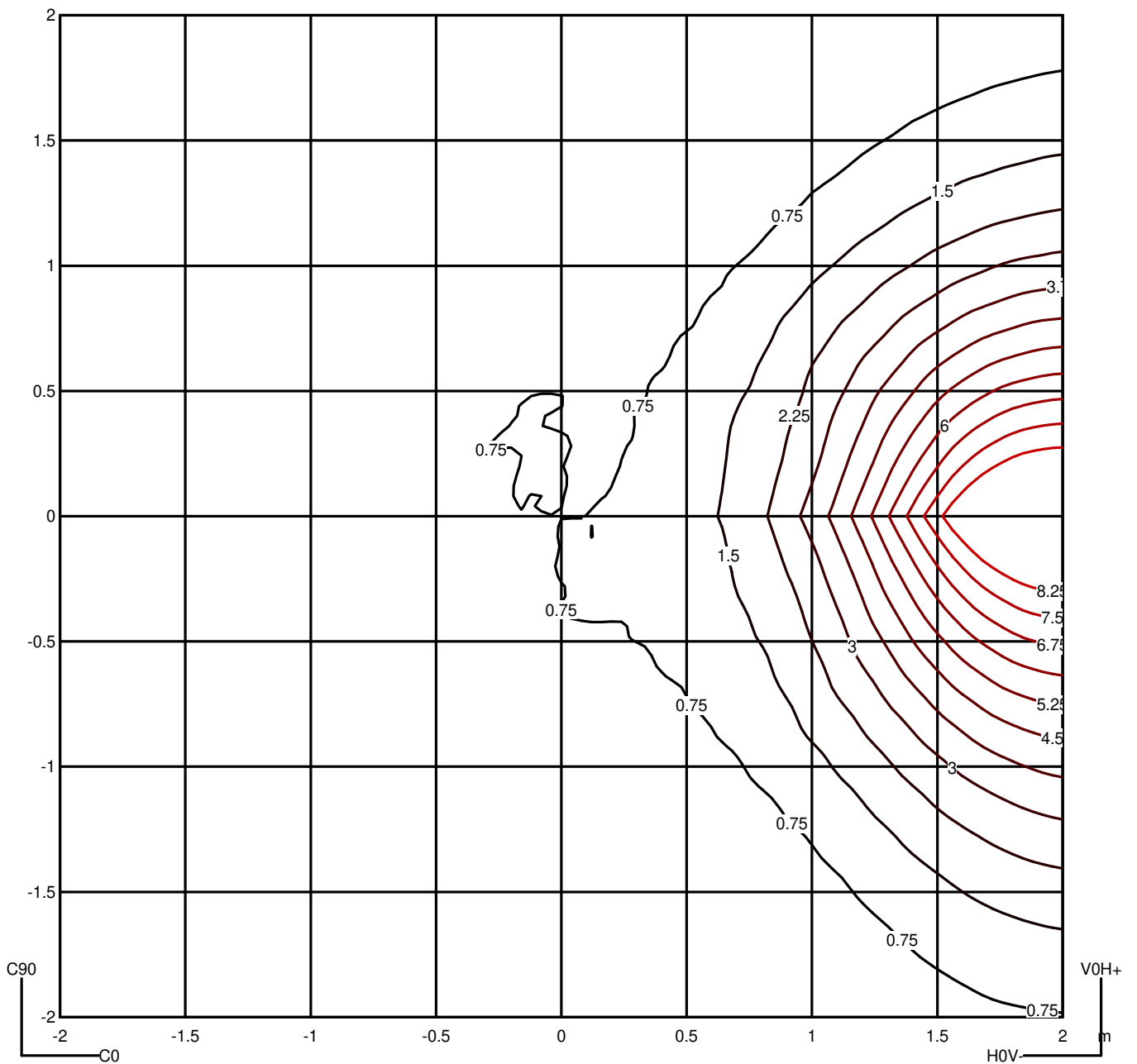
Code 05-1804-14-00

Name SECRET

Luminaire Flux	68.99 lm	Luminaire Power	2.30 W	Efficacy	30.00 lm/W	Efficiency	100.00%
Sources Flux	68.99 lm	Maximum value	2393.46 cd/klm	Position	C=0.00 G=48.00	CG	Asymmetrical

Isolux (Floor)

Luminaire position X=0.00m Y=0.00m Z=2.50m



LEDS C4[®]

Luminaire

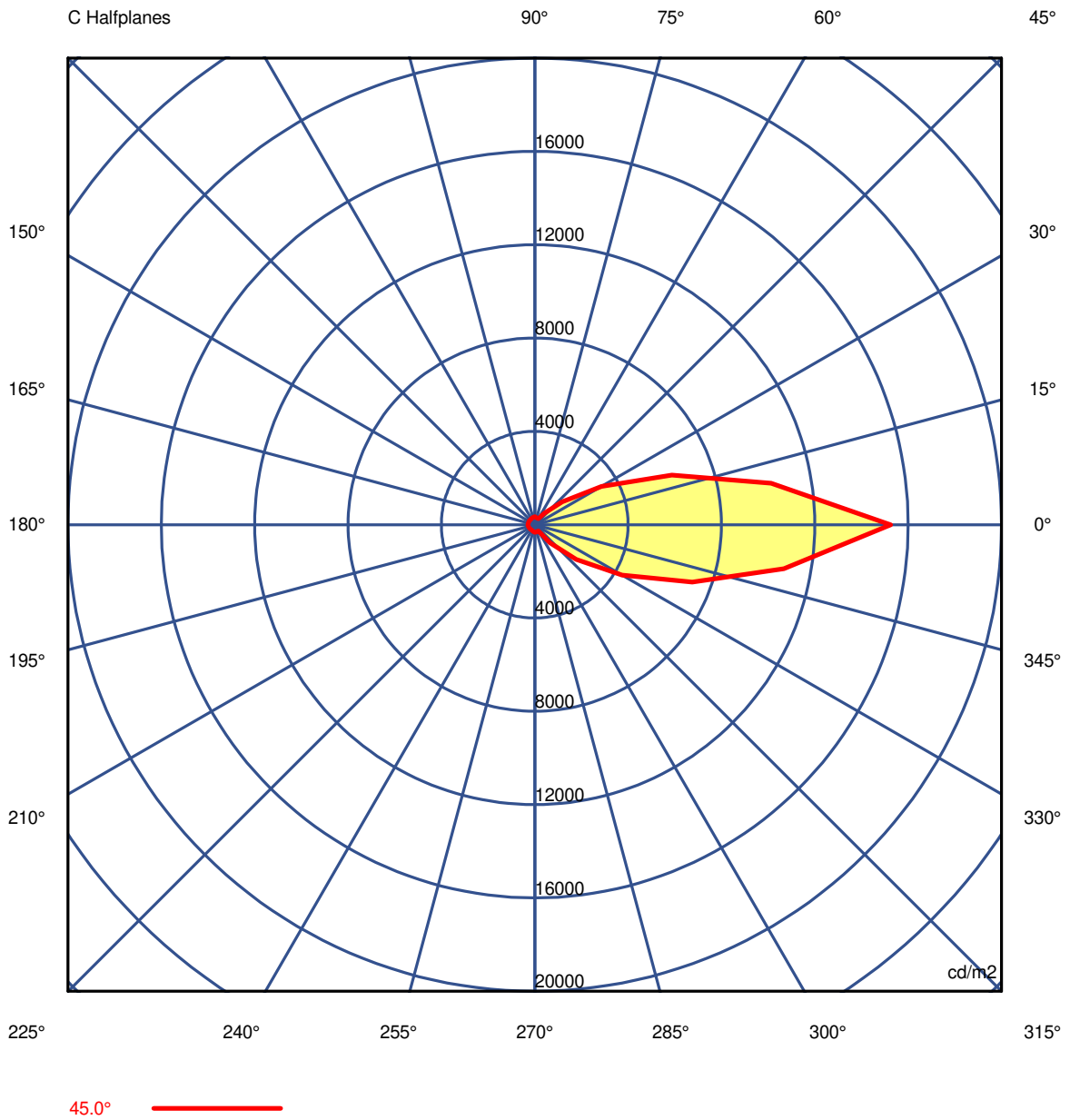
Code 05-1804-14-00
Name SECRET

Measurem.

Code 05-1804-14-00
Name SECRET

Luminaire Flux	68.99 lm	Luminaire Power	2.30 W	Efficacy	30.00 lm/W	Efficiency	100.00%
Sources Flux	68.99 lm	Maximum value	2393.46 cd/klm	Position	C=0.00 G=48.00	CG	Asymmetrical

Luminance



LEDS C4⁺

Luminaire

Code 05-1804-14-00
Name SECRET

Measurement

Code 05-1804-14-00
Name SECRET

Luminaire Flux	68.99 lm	Luminaire Power	2.30 W	Efficacy	30.00 lm/W	Efficiency	100.00%
Sources Flux	68.99 lm	Maximum value	2393.46 cd/klm	Position	C=0.00 G=48.00	CG	Asymmetrical

Luminance cd/m2 Table 1/3

	C 0.00	C 10.00	C 20.00	C 30.00	C 40.00	C 50.00	C 60.00	C 70.00	C 80.00	C 90.00	C 100.00	C 110.00	C 120.00
G 0.0	460.33	460.33	460.33	460.33	460.33	460.33	460.33	460.33	460.33	460.33	460.33	460.33	460.33
G 5.0	476.07	467.08	457.53	446.14	432.73	421.72	418.67	427.25	443.31	460.68	467.33	469.47	467.93
G 10.0	686.80	655.66	618.84	568.24	501.05	435.73	396.04	415.42	436.40	459.11	461.90	451.77	437.73
G 15.0	1021.60	953.85	877.75	778.86	651.08	521.71	426.18	423.81	423.30	424.53	421.21	419.69	420.06
G 20.0	1854.68	1588.17	1332.12	1073.90	810.47	576.92	418.48	420.81	425.68	433.06	420.11	409.88	402.29
G 25.0	3441.25	2787.38	2187.88	1632.69	1122.79	700.83	422.61	418.81	417.86	419.64	402.22	388.23	377.42
G 30.0	6441.61	4831.97	3432.30	2274.89	1385.85	758.10	386.74	382.37	381.03	382.61	372.95	366.64	363.55
G 35.0	10251.01	7325.15	4852.25	2920.94	1588.44	761.62	333.63	348.86	368.25	392.43	370.57	353.35	340.24
G 40.0	13247.65	9202.78	5850.61	3318.46	1680.79	749.90	310.35	322.02	337.91	358.64	341.43	328.81	320.31
G 45.0	15239.57	10274.90	6241.70	3299.81	1534.65	647.20	294.94	306.25	322.08	343.18	325.37	312.57	304.18
G 50.0	15996.14	10371.82	5902.52	2778.72	1093.69	420.78	271.01	287.26	308.64	336.32	313.54	296.67	284.73
G 55.0	15039.38	9407.45	5023.39	2072.25	1446.49	852.31	262.12	274.91	292.92	317.35	283.15	267.52	260.36
G 60.0	12359.96	7156.18	3222.77	755.84	580.76	418.30	260.19	272.04	289.53	314.04	284.20	261.93	245.53
G 65.0	6886.49	3846.72	1598.09	240.97	237.82	239.07	244.81	253.13	267.00	287.75	260.31	240.51	226.57
G 70.0	876.99	579.96	363.83	231.74	221.79	216.48	215.48	226.29	242.95	267.29	240.56	222.55	209.38
G 75.0	239.96	228.93	220.90	212.29	201.46	192.40	190.52	200.31	219.82	245.36	218.13	195.20	178.54
G 80.0	223.71	210.25	200.12	189.06	175.32	164.25	163.07	177.85	205.49	240.22	213.48	187.40	164.25
G 85.0	194.79	170.46	155.08	145.92	141.71	142.36	148.52	161.26	180.92	208.46	182.41	160.90	140.70
G 90.0	142.00	132.19	127.50	125.91	126.34	128.02	130.31	133.21	139.82	156.00	134.72	125.89	124.45

LEDS C4⁺

Luminaire

Code 05-1804-14-00
Name SECRET

Measurement

Code 05-1804-14-00
Name SECRET

Luminaire Flux	68.99 lm	Luminaire Power	2.30 W	Efficacy	30.00 lm/W	Efficiency	100.00%
Sources Flux	68.99 lm	Maximum value	2393.46 cd/klm	Position	C=0.00 G=48.00	CG	Asymmetrical

Luminance cd/m2 Table 2/3

	C 130.00	C 140.00	C 150.00	C 160.00	C 170.00	C 180.00	C 190.00	C 200.00	C 210.00	C 220.00	C 230.00	C 240.00	C 250.00
G 0.0	460.33	460.33	460.33	460.33	460.33	460.33	460.33	460.33	460.33	460.33	460.33	460.33	460.33
G 5.0	463.52	457.43	450.88	444.95	440.34	437.60	430.36	422.56	411.09	395.13	383.05	385.52	409.00
G 10.0	426.87	420.10	416.89	416.54	417.74	418.99	407.46	396.06	386.08	378.96	376.92	382.45	396.95
G 15.0	416.94	415.68	415.68	416.32	417.04	417.22	399.58	382.22	365.80	351.80	345.16	351.80	374.70
G 20.0	393.50	390.98	389.50	385.39	381.31	381.74	369.65	362.46	355.41	346.07	340.30	346.03	367.75
G 25.0	360.92	354.89	354.82	357.03	360.54	365.06	346.78	330.86	318.00	309.68	310.56	326.37	346.03
G 30.0	351.92	349.79	349.47	345.61	342.34	346.77	336.72	331.80	322.14	310.83	302.35	296.47	321.13
G 35.0	330.01	323.20	319.59	322.81	326.18	332.75	315.10	301.16	287.39	273.37	270.22	292.34	315.71
G 40.0	313.41	310.13	310.35	312.97	319.17	329.21	305.72	284.31	262.22	240.18	232.44	257.25	282.40
G 45.0	290.22	287.78	289.06	288.59	289.95	299.81	286.56	277.52	272.25	266.34	263.86	264.69	281.26
G 50.0	273.00	269.18	271.87	278.44	289.31	305.12	279.80	256.06	234.13	216.01	211.14	231.56	261.68
G 55.0	252.62	248.86	248.88	250.19	256.57	270.56	254.93	245.96	240.06	236.98	237.56	241.82	260.28
G 60.0	238.73	236.03	237.29	241.45	252.09	264.73	234.94	212.56	204.30	212.79	225.46	226.29	238.23
G 65.0	219.28	216.14	216.97	220.87	231.90	247.78	222.94	204.31	193.93	192.27	193.43	190.09	206.29
G 70.0	198.90	191.89	190.07	197.34	209.48	227.87	207.98	194.52	186.01	176.09	170.97	175.84	195.36
G 75.0	169.44	166.87	169.83	177.33	189.82	208.96	185.95	170.47	163.30	164.99	173.35	186.16	202.13
G 80.0	145.87	134.29	132.34	142.71	163.27	190.68	171.77	155.96	145.34	141.44	144.14	153.61	170.50
G 85.0	120.94	107.10	106.83	126.77	161.90	203.33	179.77	154.81	135.49	125.92	124.12	127.68	135.37
G 90.0	127.72	133.65	140.55	147.51	157.02	174.00	145.48	130.57	125.91	127.29	132.50	142.02	142.38

LEDS C4[®]

Luminaire

Code 05-1804-14-00
Name SECRET

Measurem.

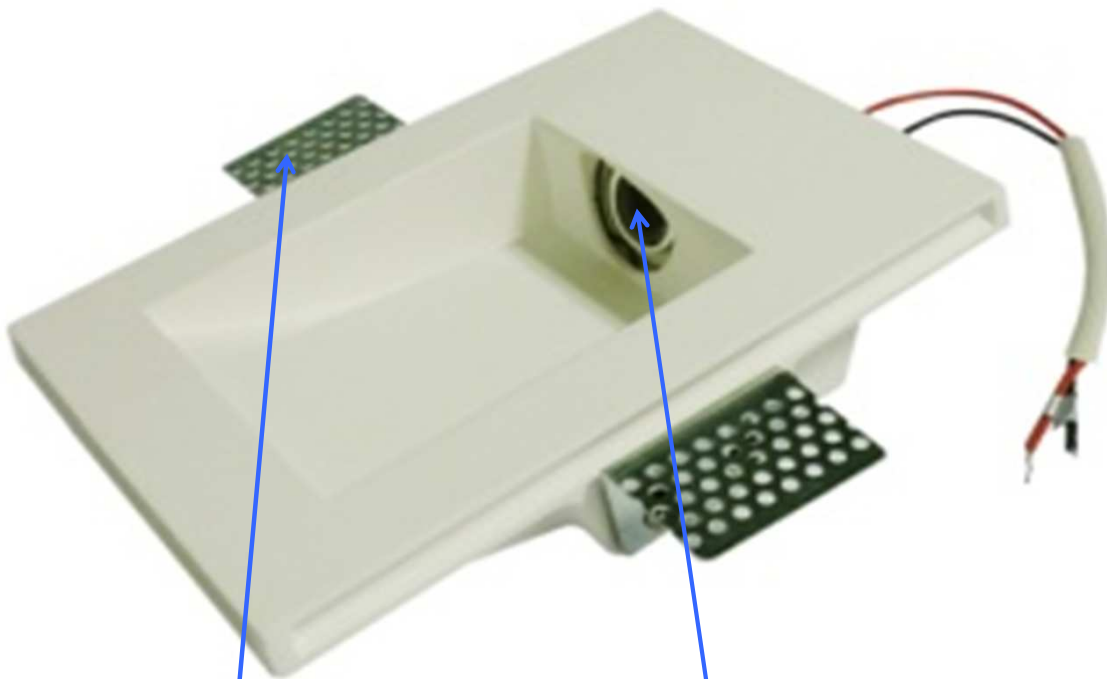
Code 05-1804-14-00
Name SECRET

Luminaire Flux	68.99 lm	Luminaire Power	2.30 W	Efficacy	30.00 lm/W	Efficiency	100.00%
Sources Flux	68.99 lm	Maximum value	2393.46 cd/klm	Position	C=0.00 G=48.00	CG	Asymmetrical

Luminance cd/m2 Table 3/3

	C 260.00	C 270.00	C 280.00	C 290.00	C 300.00	C 310.00	C 320.00	C 330.00	C 340.00	C 350.00
G 0.0	460.33	460.33	460.33	460.33	460.33	460.33	460.33	460.33	460.33	460.33
G 5.0	442.70	471.26	468.78	467.03	466.03	469.19	477.18	484.03	485.13	481.62
G 10.0	417.16	438.58	445.05	450.62	458.58	471.99	493.47	525.64	570.25	625.06
G 15.0	403.87	425.44	427.78	431.76	437.56	516.99	628.71	745.60	846.66	935.43
G 20.0	394.49	410.55	414.84	421.10	429.56	563.90	765.71	1008.27	1270.71	1551.66
G 25.0	368.92	395.48	393.83	394.74	398.34	633.87	1008.52	1492.94	2064.80	2715.71
G 30.0	349.59	382.61	376.41	373.38	373.49	739.52	1366.71	2258.33	3420.12	4825.42
G 35.0	343.36	376.15	365.36	358.41	355.10	869.89	1792.60	3179.42	5083.76	7461.68
G 40.0	312.14	347.61	332.93	322.59	316.16	987.46	2186.72	3985.64	6458.46	9564.72
G 45.0	302.38	329.04	315.52	306.54	301.66	1008.54	2305.30	4317.39	7171.20	10830.62
G 50.0	297.59	341.19	322.13	308.72	300.17	707.87	1677.86	3541.15	6597.69	10788.48
G 55.0	288.19	322.43	305.65	294.63	288.60	976.30	1668.40	2397.03	5318.14	9584.38
G 60.0	255.25	278.67	266.90	260.35	258.36	381.97	509.89	648.64	3122.97	7095.44
G 65.0	227.95	256.92	251.17	250.14	253.45	242.53	236.25	234.25	1589.65	3841.05
G 70.0	228.26	272.21	250.47	236.17	227.68	220.46	217.81	219.55	351.04	571.77
G 75.0	222.40	249.40	228.32	214.16	205.76	202.44	203.10	206.85	213.31	223.64
G 80.0	194.43	225.21	203.68	187.09	176.06	171.79	171.79	176.06	185.15	200.25
G 85.0	148.63	170.87	154.02	144.30	138.10	133.69	132.16	135.49	145.96	164.90
G 90.0	142.50	152.00	135.24	125.87	121.52	121.28	121.65	122.98	125.82	131.39

SPARE PARTS



1

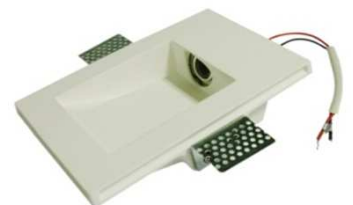
Adjustable recess system
Sistema de empotrado ajustable
R-0518041400-01



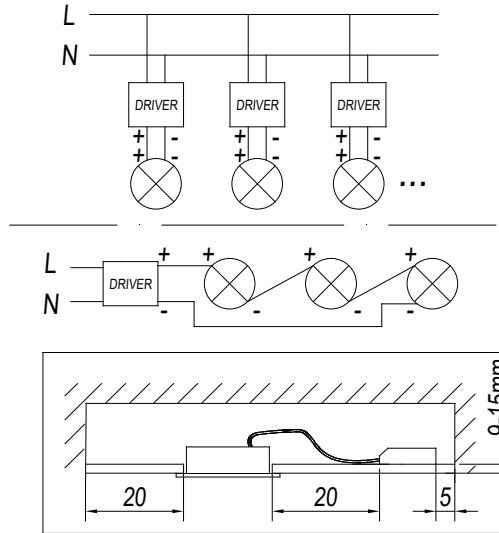
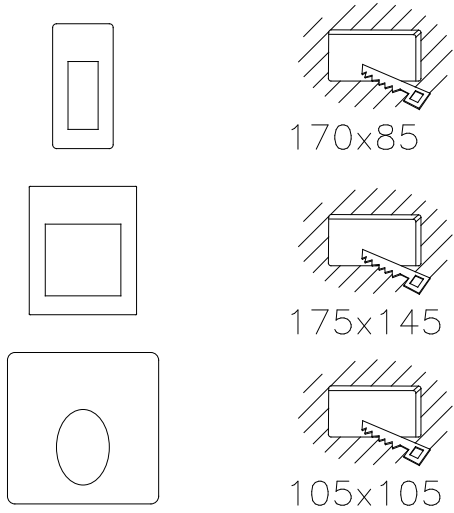
2

LED module CREE XBD +
fixation ring / Modul LED
CREE XBD + anella fixació
R-0518041400-02

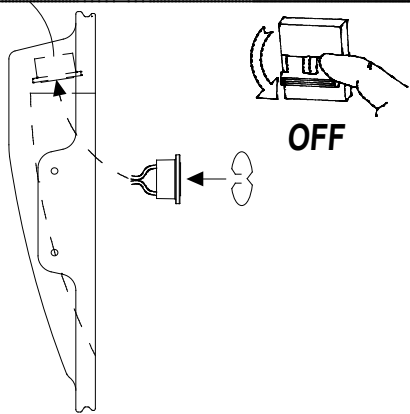
	NOM	DATA	PROVEIDOR	REFERENCIA
REVISAT:	F.CODINA	14/ago/2013		05-1804
APROVAT:	J. BALCELLS	14/ago/2013		SERIE SECRET



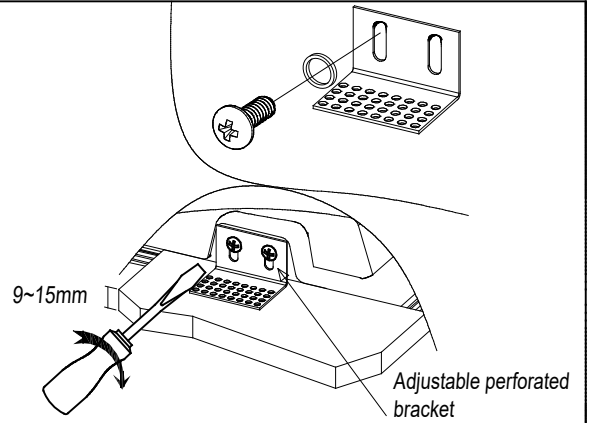
1



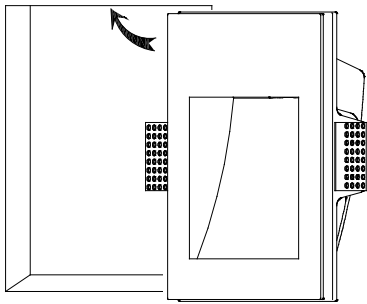
2



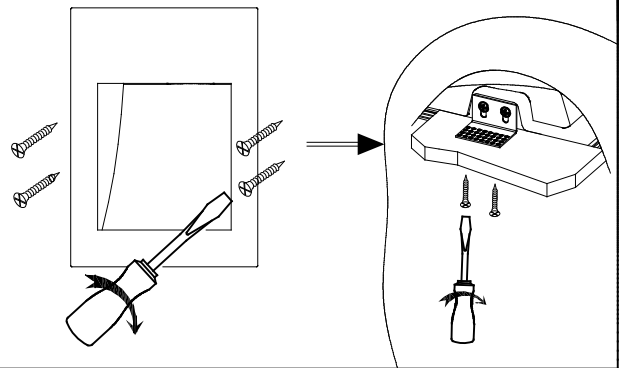
3



4



5



6

